

BICYCLE MOTOCROSS ACTION™

FEBRUARY 1980 00193 CDC \$1.50
THE WORLD'S LARGEST BMX PUBLICATION



1000 DOLLAR CUSTOM CRUISER
MORE HOT SHOTS
ABA GRAND NATIONALS



GO FOR IT!

with Troxel's
Trakmaster
Trio



Performance
plus Flash

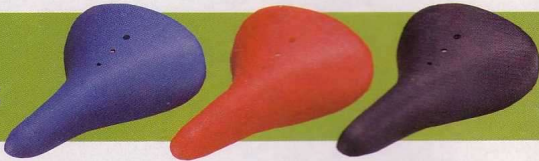


The
Wheels



Molded of glass-filled (reinforced) nylon, they're light, but tough enough to stand up to anything you can lay on 'em! Won't bend or break with sharp impact. Color is molded into plastic to last. Rear is complete with coaster brake assembled; front has strong 3/8" diameter axle assembled. Available in sets, ready for tire mounting (tires not included). They meet or exceed all CPSC standards.

The
Seats



The lightest in the world—a mere 12½ oz. (354.4 grams). Strongest, too. Undercarriage and seat are molded in ONE piece of high-impact polypropylene with extra support in center impact area. Strong plated steel mounting clamp. Meets all CPSC standards.



The
Pads



For bar, frame and stem, are super-shiny, high gloss vinyl over thick, shock absorbing foam padding. Strong snaps fasten securely.

All three color-matched
in red, yellow, blue, black
and available now at
your bike dealer



Makers of
dependable, quality
bicycle products
for over 80 years

TROXEL MANUFACTURING CO., MOSCOW, TN 38057

BICYCLE MOTOCROSS ACTION



FEBRUARY 1980
VOLUME FIVE
NUMBER TWO

Publisher and Editor
BOB OSBORN

Advertising Director
YVETTE BARNETT

Art Director
GARNET BLAIR

Marketing Director
RICK RAUS

Distribution
EDDIE HAMBY

Associate Editor
DEAN BRADLEY

Subscriptions and Photography
WINDY

Customer Relations
VALERIE DEMIRJIAN

Photo Production
COMPETITION PHOTOGRAPHERS

Artist
BOB HARO

Test Consultants
R.L. OSBORN
MIKE BUFF
LIL' ROBERT EMRICH
BUILDING LEAPIN' JONES

Contributing Editors
MATT RAYMER
STEVE GIBERSON

Factory Mouser
MOTO CAT

Editorial and Advertising Offices
WIZARD PUBLICATIONS
2909 OREGON COURT C-5
TORRANCE, CA 90503
TEL: (213) 533-6016

**Advertising Representative
in Japan**
TANDEM, INC.
301 NAKATO BLDG.
15-22 DOHYAMA-CHO
KITA-KU, OSAKA 530, JAPAN
TEL: 06-351-6800

Stanley Robinson and Brent Patterson
leading the Charge of the Light Brigade.
ABA/DG Grand Nationals, Las Vegas,
Nevada.

BICYCLE MOTOCROSS ACTION



1000 DOLLAR CUSTOM CRUISER
MORE HOT SHOTS
ABA GRAND NATIONALS

4 EDITORIAL

Choice words on drawing lotsa riders

11 DEAR WIZ

Moto-poetry and Pud Cat

18 PRODUCTS

Does Gipiemme really mean what it sounds like?

24 DEMO

A BMX sampler at the Anaheim Motocross Finals

28 SAVING FACE

The oriental art of remaining inscrutable

38 ABA GRAND NATIONALS

The Avalanche registers 9.5 on the Richter Scale

52 PRODUCT ANALYSIS: ACS ZYTEL WHEELS

More competition in the plastic wheel field

60 THE "CALIFORNIA CRUISER"

A thousand bucks on the hoof

64 HOT SHOTS

Finger lickin' Nikon tricky clickin'

78 ODDS AND ENDS

Numero uno and a lot of air

BICYCLE MOTOCROSS ACTION (USPS 374-490) is published 12 times per year by Wizard Publications, Inc., 2909 Oregon Court, C-5, Torrance, California 90503, Tel: (213) 533-6016. Second class postage paid at Torrance, California and at additional mailing offices. Subscriptions cost \$14.50 per year for 12 issues. Foreign subscriptions add \$4.00 per year and Canadian subscriptions add \$3.00 per year for additional postage. Copyright © 1980 by Wizard Publications, Inc. All rights reserved. Nothing in this magazine may be reprinted in whole or in part without the express written permission of the publisher.

EDITORIAL CONTRIBUTIONS are welcome. All submissions should be accompanied by a self-addressed, stamped envelope. All manuscripts should be typed and double-spaced. Photographs must be 5x7 or 8x10 glossy black and white or 35mm or larger color slides. Please mark each photo with owner's name and address. WIZARD PUBLICATIONS, INC. assumes no responsibility for loss or damage of submitted material. Submission of a manuscript, photographs, advertisement, etc. to BICYCLE MOTOCROSS ACTION is the author's, photographer's, or advertiser's warranty that the material is in no way an infringement upon the rights of others and that material is released for publication without additional approval. BICYCLE MOTOCROSS ACTION, P.O. Box 5277, Torrance, California 90510.



EDITORIAL BY BOB OSBORN

ter. What she really does is gossip with BMX people all over the U.S. of A.

Many times she has to promise not to tell a soul in order to get some of the REALLY juicy gossip, but that's okay 'cause she always tells me anyway. But that's okay too, 'cause I'd never tell a soul... either.

Yeah, boy. If you want to know ANYTHING about BMX, ask Yvette. She is an absolute Dumpster of information... the Rona Barrett of BMX.

In addition to Yvette, we get somewhere over a hundred letters each day, mostly from BMX people. You might say that we have our finger squarely on the pulse of BMX. Anyway, you have to admit that we're pretty well informed. No brag, just fact.

So it was during the summer of '79 that rumors kept floating through the posh, plush, professionally decorated offices of the Most Factory Magazine about a couple tracks in the Mid-West that were drawing 400 to 500 riders at every race they ran.

I didn't pay much attention to these rumors at first 'cause I know how much I tend to exaggerate, and I figured these

people were probably doing the same thing.

Well, a few weeks ago I had occasion to fly back to Indiana, and while I was there I discovered that these people hadn't exaggerated a hair. It was true: 400 to 500 riders every time they opened their gates! And these were just local races!

Bud's BMX Track in Elkhart, Indiana is one of 'em. The other is the Capitol Area Supercross BMX Track in Lansing, Michigan. There are a fair number of other tracks operating in Indiana and Michigan, but none so successful as these two.

While in Indiana I had a chance to talk to the person in charge of each of these tracks; Jerry Edman from Elkhart, and Dennis Kalsow from Lansing. And you can bet that I was trying to pick their brains for secrets.

Of interest right off the bat was the fact that Jerry and Dennis compare notes often and run pretty much identical programs. Of almost no interest, because it doesn't prove beans, is the local populations; Elkhart 50,000, Lansing 150,000.

TRACK OPERATORS: WANT TO GET 500 RIDERS AT EACH OF YOUR RACES?

I don't want to sound like I'm bragging or anything, but we here at WHATSA get more of the latest poop on what's happening in all phases of BMX than probably anybody else in the sport.

It's true. We get all the hot rumors, up-to-the-minute gossip, assorted drivel, outright lies, and even a few facts.

The main reason for this is our frizzy-haired Advertising Director, Yvette. She spends almost all her time with a telephone glued to her ear. She's supposed to be selling ads, but I know bet-

Reynolds 531 Cycle Tubing

They've bashed it.
They've smashed it.
They've crashed it.
But they couldn't bend it.



Reynolds 531 Manganese Molybdenum Cycle Tubing, gives you strength and lightness where you need it most. Insist on the best, Reynolds 531.



TI Steel Tubes (USA) Inc. PO Box 1222, West Caldwell, New Jersey 07006. Telephone: (201) 575 9668. Telex: 13-8971.

"Now you can join the most exclusive club in bicycle motocross!"



Shimano's Factory Team West: Bobby Encinas, Chris Allen and David Clinton.

Shimano's Factory Team has led the way since the very first bicycle motocross race. Shimano sponsored it. And since then living legends of the sport, like John George, David Clinton and Bobby Encinas, have raced Shimano's colors and components to victory.

For the 1980 racing season you can wear our colors and join the most famous team in the business through the Shimano Bicycle Motocross Club. And as a special bonus we've put together an incredible package of Totally Factory Goodies.



First you get a primo quality, official Factory Team T-Shirt. Handsomely done up in our three competition colors, this is one shirt that'll make you look tough even when you're just layin' back.



Then we toss in that hot embroidered patch you've seen sewn on the jersey of just about every factory heavy hitter around. And it'll look just as sano on your jacket or cap.

OK Bobby! Sign me up!

I want to join the Shimano Motocross Club and take advantage of your charter membership offer including T-Shirt, patch, decal set and 1-year subscription to "On the Pedals" (A \$20.00 value!) I've enclosed \$10.00 (check or money order, Calif. residents add .60 sales tax). So hurry up already!

T-Shirt S M L XL

Name _____ Age _____

Street _____

City _____ State _____ Zip _____

Member: NBA ABA (Other) Class _____

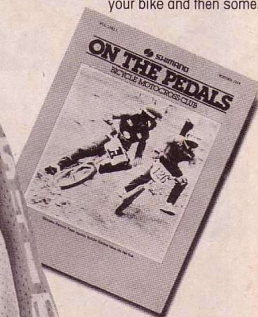
Track location: _____ Frame Make _____

(Checks payable to Shimano Motocross Club. Please Print! You Turkeys.)

Bobby Encinas

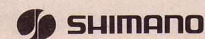


Club members also get what just may be the last word in super decal sets, with a two sheet package of 9 (count 'em!) full-color/chrome mylar stickers...enough for every tube on your bike and then some.



And to keep you right up to date on all the action you'll get a one year subscription to "On the Pedals," official journal of the Shimano Factory Team.

Published quarterly, "On the Pedals" is crammed with Hot Tips and Speed Secrets from the pros, plus the latest on trick new components and Shimano racers all over the world.



9259 San Fernando Road
Sun Valley/California/91352

AT THE BIKE SHOP... SHOWROOM...



AT YOUR PLACE OF BIZ... THE TRACK...



AT HOME... IN YOUR ROOM OR GARAGE...



NAGAOKA HOLDS IT UP! THE STAND THAT WORKS

Quick shipments from U.S.A. warehouse!
Distributors and dealers contact:
**EVERYTHING BICYCLES, 15000 Staff Court,
Gardena, CA 90248 • (213) 532-7261**

Manufacturer:
NAGAOKA METAL INDUSTRIAL CO.
c/o Teel, Inc., 114 Essex St.
Rochelle Park, NJ 07662

EDITORIAL

As near as I could tell after talking for a while, Jerry and Dennis were doing three main things, in addition to running good races, that might account for the huge number of riders they were drawing.

NON-PROFIT CORPORATION

Each track had formed a non-profit corporation of parents to govern and run it. If you think about it, this deal makes a lot of sense. First, because of the protection from individual liability that incorporation provides, it's easier to get more parents involved. Then, because there is greater clout in greater numbers, and because it is a non-profit corporation, land is easier to acquire.

SCADS OF TROPHIES

The next thing they did was award trophies to EVERYBODY who made the main. That's like ten trophies for each class! The first thing I said was, "That's too many trophies... they will lose their value to the racers. Nobody will care if they win one. It's too easy for them. They're gonna get spoiled."

Jerry and Dennis opened their eyes wide, turned palms up, shrugged their shoulders, and said, "500 racers."

And anyway you cut it, that's tough to argue with. Maybe our thinking has been wrong on this point. According to Jerry and Dennis, this many trophies cost a lot more money, but a lot more riders come to their tracks, so it works out.

SPECIAL SHOWS

In actual fact, it works so well that both corporations have enough money to put on special shows at some of their races like sky divers or hot air balloons. This in turn brings out more spectators and parents.

And if these two tracks have any secrets, that's them. Except I should add that the leadership and involvement in both corporations are dynamic and innovative, and the goal of both is to put on the best possible races for the kids.

Please do not misunderstand what I'm saying here. I am NOT advocating an instant switch to ten trophies per class and skydivers at each race. That would probably bankrupt your track in short order.

What I AM saying is that these people are doing SOMETHING awfully right. If we can learn something from their experience, and CAREFULLY try some of their concepts, and they work, then the whole sport gains. ★

HI-POWERED HI-TOPS!



Listen to what Greg Hill is saying about Van's:

"You know what you need to win. You need traction, fit, and comfort. Van's knows what you need, too, and that's why the latest **Off the Wall** is the Hi-Powered Hi-Top."

Van's #38 is the newest in the finest collection of super BMX footwear. When you hit the trail, you need to depend on shoes that grip and pull you first to the finish. Van's #38 is our highest Hi-Top ever, with extra cushioning and support in the ankle and arch...right where it counts. The new toe ventilation keeps you cool, and the leather heel, toe, tongue, and eye stays assure long wear and durability. Van's exclusive waffle design sole is

constructed with the super grip built right in. When you pump your pedals, you can feel the Van's difference...the difference that makes you a champ.

And now, you can get the same great "Off the Wall" dependability in Van's new slip on. Ask to try a pair of the new #98's!



VAN DOREN RUBBER COMPANY
704 E. Broadway
Anaheim, California 92805
(714) 772-8270



HANDCRAFTED AMERICAN-MADE ATHLETIC FOOTWEAR

Dealer Inquiries Invited (except in Southern California)
Suggested Retail Prices: #38: \$29.95, #98: \$19.95

From Take-off... To Splashdown



There's no test too tough for Supergoose! Whether you're slicing through a sheet of water, banking your way through a berm, or landing off a jump, you've got more to think about than your bike. Mongoose factory astronaut Danny Oakley knows he can trust his Supergoose. It's designed with spacecraft quality all chromoly frame and fork. Super light anodized alloy wheels for super quick take-offs. Stainless steel handlebars and seat post for years of rough landings. 7^{1/8} chromoly crank to get all the thrust where you want it - to the rear wheel. No flexing, bending or twisting - which means no power loss. Engineered to be light-years ahead of the competition. When you are ready, Splashdown with confidence.

Supergoose - Test Fly one at your local bike shop!

mongoose

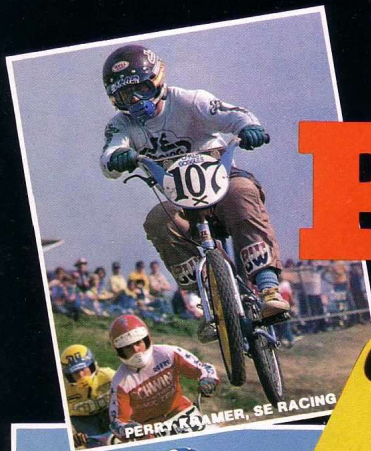
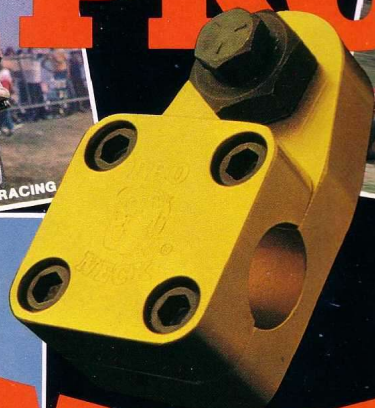
© 1979 B.M.X. PRODUCTS, INC., 9624 IRONDALE AVE., CHATSWORTH, CA 91311

SPECIFICATIONS SUBJECT TO CHANGE WITHOUT NOTICE

THE NEW KING OF KINGS

**STRONGER THAN EVER
WITH A CHROME-MOLY STEM**

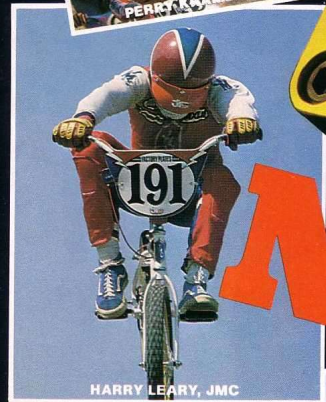
PRO NECK



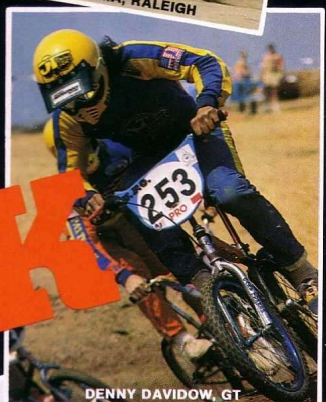
PERRY KRAMER, SE RACING



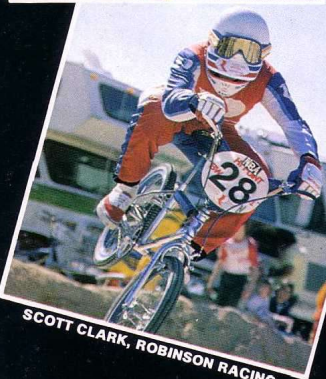
JEFF BOTTEMA, RALEIGH



HARRY LEARY, JMC



DENNY DAVIDOW, GT

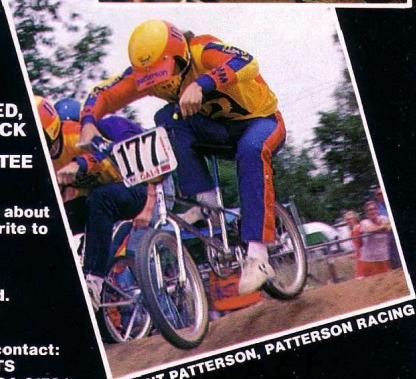


SCOTT CLARK, ROBINSON RACING

**COLORS: BLUE, RED,
GOLD, SILVER, BLACK
ONE YEAR GUARANTEE**

Ask your local bike shop about the new PRO-NECK or write to manufacturer:
TUF-NECK, INC.
Pro Neck Division
3429-K Pomona Blvd.
Pomona, CA 91766

Dealers and Distributors contact:
CYCLE COMPONENTS
P.O. Box 4667 • El Monte, CA 91734
(213) 686-2194



BRENT PATTERSON, PATTERSON RACING

DEAR WIZ

Unafraid, we herein solicit social comments, remarks about articles, suggestions, assorted drivel, or whatever.

PUD CAT

I'd like to tell you about our version of Moto Cat. Our cat's name is Pud and he's one gnarly cat. He's sponsored by Purina and co-sponsored by Harry's BMX Pet Shop. BMXA is the only magazine he reads. He uses the other magazines to line his lightweight drilled-out aluminum alloy litter box. As for mousin', this cat reeks of trickness. He always hole-shots mice and usually thrashes on them.

Mike Daly
Olympia, Washington

Sure, Pud has good taste in publications, Mike, but let's get a couple little kitty BMX bikes and little kitty crash helmets, and Moto will blow the doors off Pud. -Oz.

NO SLACK AT ALL

In the October '79 issue of BMXA you

SEMI-IMPORTANT NOTICE:

To all you racing fools who write to Hefty BMXA, we thank you each and every one. We read every letter you send. But, alas and alack, there's just no way we can run them all . . . short of publishing something the size of the Sears Catalog. What we can do is run the most interesting and informative letters in "Dear Wiz." To the rest of you dudes . . . well, that's how the cookie crumbles. But it doesn't mean we don't still love ya'.

ran a "Profile" on Gary Renteria where you said, "Master Renteria would not be caught without his Oakley goggles." Okay, but in the Tuf-Neck advertise-

ment in the same issue there's a picture of him without ANY goggles on. I was wondering if that was an actual race or just a picture session?

Jeff Bafus
Colfax, Washington

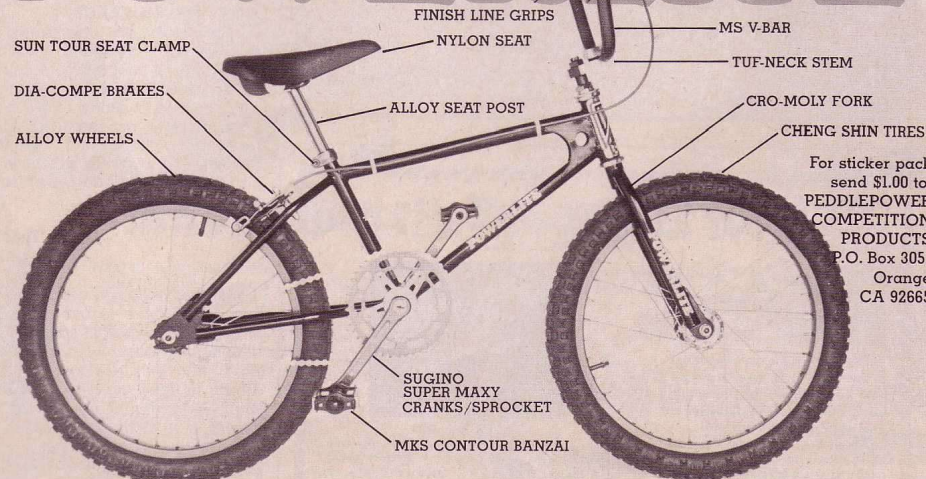
Yeah, Jeff, in the Tuf-Neck photo he was racing. Sorta blows Renteria's cover, huh? I gotta tell ya . . . all you sharp-eyed turkeys sure keep us on our toes. But then, to catch us with our pants down, you have to read the magazine VERY CAREFULLY, don't you? Now the question is; Are these little bloopers dumb accidental mistakes on our part, or fiendishly diabolical zingers to cause everybody to read BICYCLE MOTOCROSS ACTION more? -Oz

THANKS

I just want to say thanks to the Most Factory Magazine staff for finally going

Wow! What a Hot Bike... All the Trick Colored Stuff!

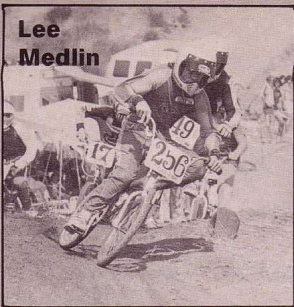
POWERLITE



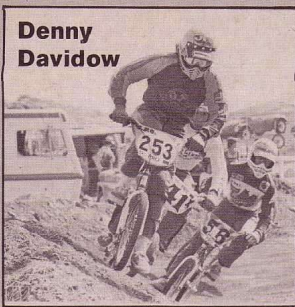
For sticker pack send \$1.00 to:
**PEDDLEPOWER
COMPETITION
PRODUCTS**
P.O. Box 3051
Orange
CA 92665

**IF YOUR FAVORITE BIKE SHOP DOESN'T HAVE POWERLITES, TELL 'EM TO CALL:
EVERYTHING BICYCLES, 15000 Staff Court, Gardena, CA 90248 • (213) 532-7261**

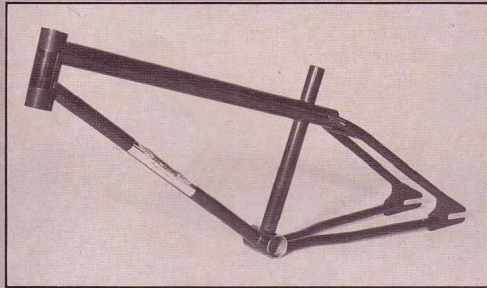
Lee
Medlin



Denny
Davidow



They depend on



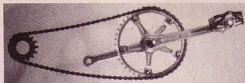
• 4130 CHROME-MOLY • 3 lbs. 4 oz. • IN CHROME
BLACK, BLUE OR RED • EUROPEAN BOTTOM BRACKET
(AMERICAN BOTTOM BRACKET AVAILABLE SOON)

GT BMX

2024 E. Lincoln Avenue • Anaheim • CA 92806 • (714) 956-1313

DEALER INQUIRIES INVITED

POWER HERE
Means Power to the
Rear Wheel



The Crank is the most important component on your bike. Too much flex and weight robs valuable power. Get rid of the kiddie colors and move up to the pro stuff.

Gipiemme offers three styles to choose from. Prices start at \$55.00 including chaining. The pantograph is featured above: \$95.00.

Prepaid orders receive extra chaining free.

Gipiemme — Out Front Again

- Lightweight
- High Quality Finish
- Super Strength



Team
Chicago

YOUR EUROPEAN CONNECTION

4646 N. KILPATRICK AVENUE
CHICAGO, ILLINOIS 60630

Phone: (312) 725-2115

Send \$3. for Brochure and Sticker.
DEALERS INQUIRIES INVITED

DEAR WIZ

monthly. You guys done real good. Now, how about going weekly?

Craig Neely
Allentown, Pennsylvania

WEEKLY? GASP, CHOKE! You want WEEKLY now? WHEEZE, SEIZURE, CUSS!—Oz

PARENTS, INC.

The Capitol area Supercross BMX Track closed out its 1979 season on October 7th due to the onset of winter weather. In its first year of operation the Supercross Track averaged over 550 riders per race over its 12 race season.

This track is operated by the Capitol Area Supercross Association, Inc., a non-profit organization of parents. Our only objectives have been to provide a quality track that is safe and fair in its operation, and to reward the racers' efforts with good quality trophies.

We've enjoyed working for the kids, and believe that BMX is a great youth and family activity. We want to thank all the people at BICYCLE MOTO-CROSS ACTION for bringing to the kids the latest information about the sport, its products, and its superstars.

It's great to be part of it all!

Dennis Kalsow
East Lansing, Michigan

Ain't it ever!—Oz

WHY FREEWHEELS?

I get to buy some new cranks and a sprocket. I'm 12 years old, 5 foot 3, and 105 pounds. If I get 6½ inch cranks and run an 18 tooth sprocket in back, how big of a sprocket should I have in front?

Also, I asked my dad if I could get a freewheel and he said, "What for? Calipers and a coaster are better than just calipers." Why do Pro's use freewheels?

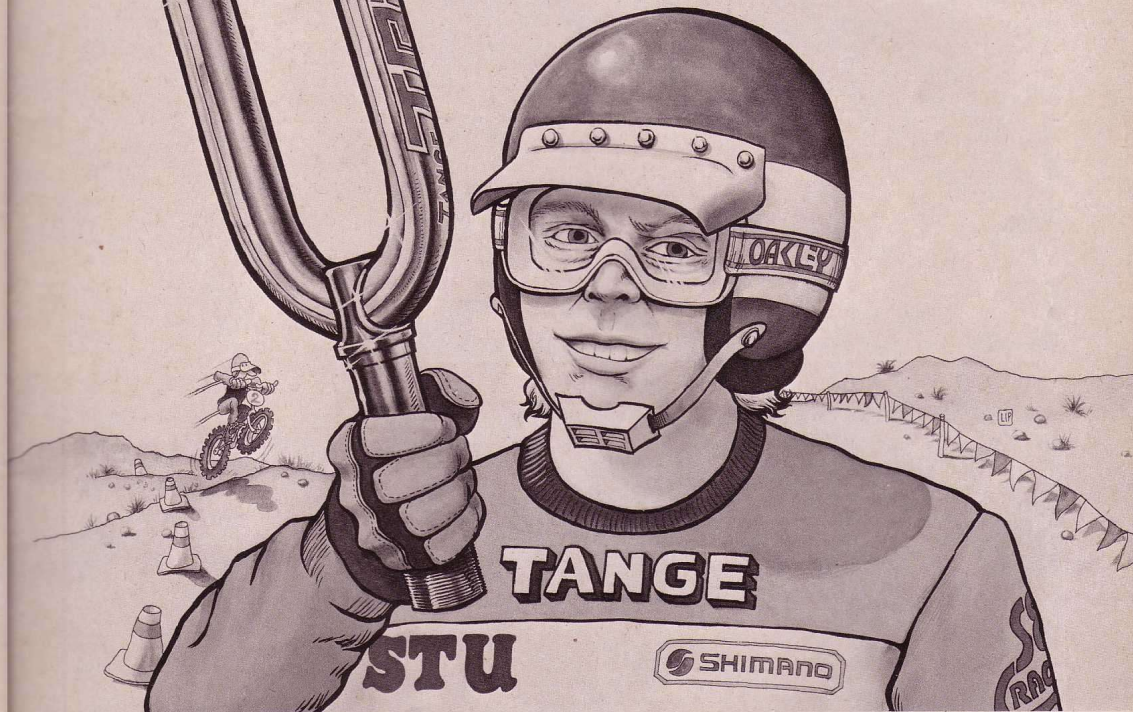
Todd Miller
Heppner, Oregon

With the set-up you described, Todd, you would have to use somewhere around a 50 tooth front sprocket, which would probably hit your right side chin stay. Plus, it's kind of Mickey Mouse to run great big sprockets. For max performance try 6¾ to 7 inch cranks, a 16 tooth rear sprocket, and a 43 or 44 tooth front sprocket.

To answer your question about why the Pro's use freewheels . . . when you get to that level of racing, EVERYTHING is critical. A freewheel is

BICYCLE MOTOCROSS ACTION

"Eat Less Dirt"



Introducing the Tange TRX fork.

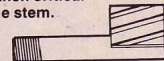


Stu Thomsen's
aerial ballet.

High jumping hotshoes like stompin' Stu and Bobby Encinas aren't looking to go soil prospecting when they come down to earth.

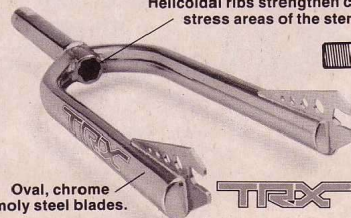
That's why they're teamed up with the Tange TRX. Our new TRX fork has a tough combination to beat; it's both lightweight quick and superman strong.

Helicoidal ribs strengthen critical stress areas of the stem.



Then we dialed in the rake and precision hand-welded the TRX for responsive handling over radical bumps and berms.

So take a tip from the pros; if you're lookin' to get air, look into Tange TRX.



Oval, chrome moly steel blades.

TRX

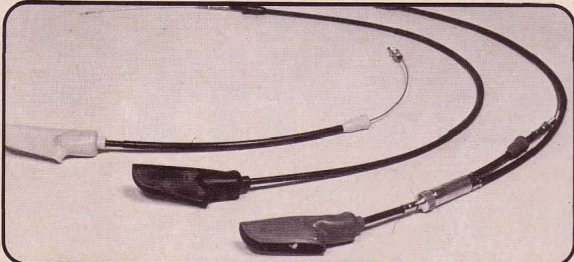
TANGE
6-635 Otori Higashi-Machi Sakai
Osaka, Japan

For more information please contact:

SHIMANO SALES CORPORATION 9259 San Fernando Road Sun Valley, California 91352



TERRYCABLE
P.O. Box 1321
Hesperia
California 92345
(714) 247-2646



TERRYCABLES are used by most factory sponsored motorcycle riders. NOW YOU CAN GET THE FAMOUS TERRYCABLE SPECIALLY DESIGNED FOR YOUR MOTOCROSS BICYCLE.

- Super smooth lined cable requires less strength to activate braking.
- Quicker stopping, more control.
- Strong housing resists stretch, no mushy feel to the brake.
- More precise, smoother action.
- Rubber covers for levers keep dirt out for better action.

WITH THE SUPER SMOOTH TERRYCABLE YOU WILL GET THE MOST OUT OF YOUR HIGH PERFORMANCE BRAKE PADS AND RIMS. ENERGY IS NOT LOST IN ACTIVATING THE CABLE.

- Individually packaged including stickers.
- Rubber covers come in 3 colors: yellow, red, black.
- Three styles available: 1) front brake 2) rear brake 3) special dual activating brake from one lever.

WRITE OR CALL FOR FREE LITERATURE

Dealer inquiries invited.

DEAR WIZ

lighter and causes less turning resistance than a coaster brake. At the Pro level, to stay competitive, you MUST run a freewheel, you MUST run aluminium rims and .080 spokes, and you MUST perfect and use the two-pedal start. Nobody will even argue about these things anymore.

Naturally there are a few exceptions to these rules, like the Corona Kid, Kevin McNeal. But then, Kevin is an exception to almost EVERY rule!—Oz

R.L. PHOTOS

Tell R.L. he does rad jumps.

Art Peterson
Allendale, New Jersey

How come R.L. always gets so many photos in the test articles?

Ron O'Brien
State College, Pennsylvania

Well, Ron, ALL the BMXA test guys have great style, know a lot about handling and geometry, and are almost fearless. But R.L. is my son and I love him. That's why.—Oz

ONE BATHROOM

I just wanted to compliment you on your mag. But I don't want you to think it's just another bunch of pretty words, so see if you can read between these lines.

We are a four person home; two boys, one mother, one father . . . one bathroom. All our monthly magazines are kept in our bathroom . . . except BICYCLE MOTOCROSS ACTION. We hang on every word.

Carol Perrone
Far Hills, New Jersey

Uh, thanks a lot, Carol . . . I guess.—Oz

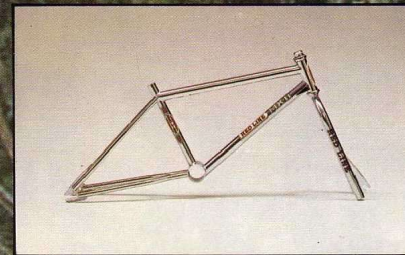
MUSICAL SPONSORS

How come the Jan/Feb 1979 issue of BMXA says David Clinton uses a Diamond Back frame and the June 1979 issue has a Red Line ad that says he races for them?

Jim Grantham
Spring Valley, California

Well, James, you eagle-eyed son of a gun, it sure does look like David Clinton has been playing musical sponsors lately. But you don't know the half of it. Due to an incredible string of events (that everybody is dying of

BICYCLE MOTOCROSS ACTION



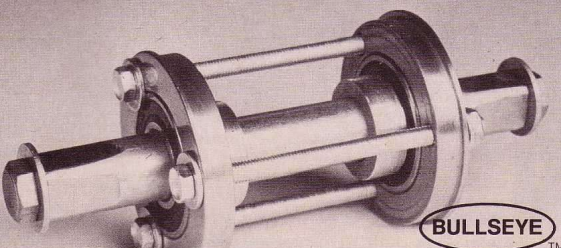
Great Hill

To the edge with Red Line

The original chrome moly frame, the Red Line MX-II, moves farther ahead of the pack now that the weight has been reduced to 4 pounds. Now offered, with the original Red Line all chrome moly fork, in White, Red, Blue, Yellow, Black and now TEAM CHROME finishes.



Red Line Engineering • 830 Tourmaline Drive • Newbury Park, CA. 91320 • (805) 498-6783



BULLSEYE
BALLBRACKET
FOR AMERICAN FRAMES

- Sealed Ball Bearings are easily replaced.
- Cups slip into frame and are securely held in place by cross bolts. No press fit hassle.
- Cups are highly polished and anodized Red, Blue, Gold, Black or Silver.
- Adjust laterally for precise chain alignment.
- About \$40.00 at your dealer.

Durham Bicycles
(213) 664-4534

Good and Tough MOTO-X-ROSS



Ready for Action!

If you're a tough rider, you need a Ross RMX. Tested tough and ready for you at a nearby Ross dealer!

- New RMX customized gusseted frame.
- New RMX heavy-duty tempered steel tubular fork.
- New RMX racing black sport handlebar with crossbar pad and forged stem.
- RMX gumwall or black mud stud tires, 20 x 2.125".
- 5-step paint finishing process. Available in silver, black, red or blue.
- Tough, reflectorized ball-bearing pedals.



Check the yellow pages for the ROSS Bicycle dealer nearest you.



DEAR WIZ

curiosity to know about and I'm not going to tell), in the last year or so David has gone from Shimano (with a Diamond Back co-sponsorship) to Red Line to DG and now back to Shimano (again with a Diamond Back partial).
-Oz

BMX . . . MY LIFE

Mess around on my bike all week. Sometimes it gets very bleak. I live for Fridays just to race. You can see it in my face. When Friday comes and school is out, Racing is all I think about. I get home in seconds flat Always forget to feed the cat. I load up my bike, tools, and gear. Woopee! Yahoo! The weekend is here! I don't always win, but I sure as (beep!) try. And when I lose I try not to cry. My heros are Haro, Stu, and the rest. All the guys who race the best. I live for racing, I race to live, For cross-ups and berms, my life I would give!

All the guys at the track think my poem is worth printing in the ever-famous BMXA. It may not be great, but then again I'm not a poet.

D.O.
Gilbert, Arizona

*I don't like washing dishes,
And I don't like knitting.
About being a poet,
Boy, you sure ain't kidding!* -Oz

BULLETPROOF ALUMINUM RIMS

You dudes at the Most Factory Magazine are doing a bang-up job. Keep up the good work. I would like to know if there is an aluminum rim that will hold a 14 year old, 5 foot 9, 170 pound kid like me. All my friends say I'll fold an aluminum rim the minute I take it over a jump. If there is one, where can I get 'em and how much are they?

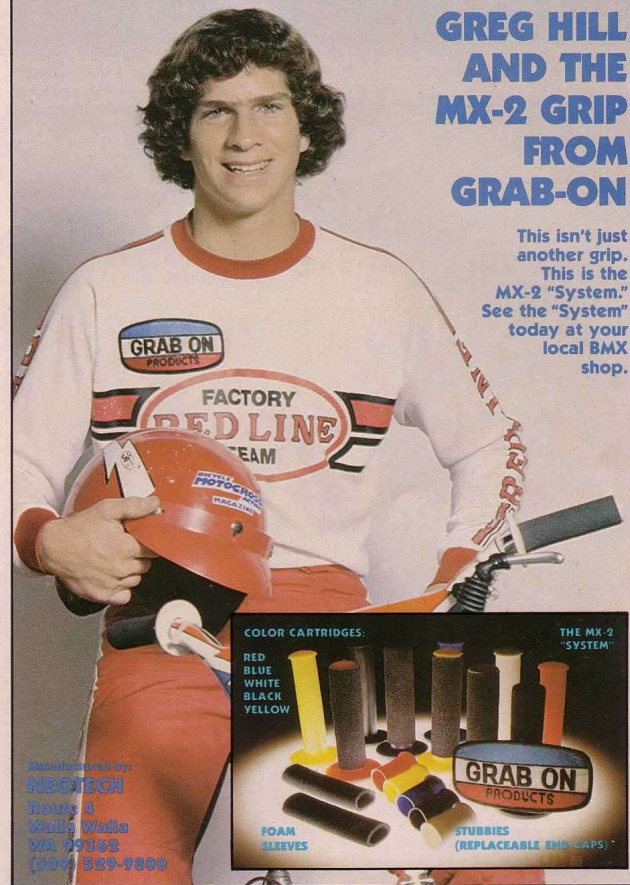
Dennis Davidson
Oak Harbor, Washington

14 and you're that big? You're a hefty devil, aren't you. Go for the Araya aluminum box rims. They are light and so strong that if we had a BMXA Seal of Approval, we'd award it to them. Lace them with 80 gauge spokes and keep the spokes snugged up. You can get 'em at most any bike shop that is into BMX. They should cost around \$14.00 for the rim only--no spokes, etc.
-Oz *

2 HOT TO HANDLE

GREG HILL AND THE MX-2 GRIP FROM GRAB-ON

This isn't just another grip. This is the MX-2 "System." See the "System" today at your local BMX shop.



Manufactured by
NEOTECH
Route 3
Walla Walla
WA 99362
(509) 829-9800



WHO THE HECK IS RRS?

We carry all the race-tested, top class equipment. So, if you can't find what you want, call us. We'll ship it to you!
For phone orders call (714) 689-6131 NOW!

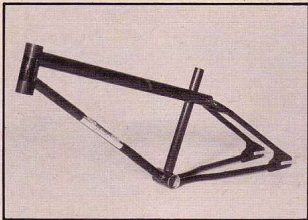
OUR SPECIALTIES:

- Coronal/Haro Shirts
- Custom Wheels
- RRS Shirts/Hats
- Schwinn Cruisers
- Custom BMX and Cruisers

RIVERSIDE SCHWINN
9631 Magnolia, Riverside, CA 92503

REDLANDS SCHWINN
827 W. Colton, Redlands, CA 92373

PRODUCTS



GT STANDS FOR "GET TROPHIES"

What do Pedlin' Lee Medlin and Dicin' Denny Davidow have in common? One, they both ride faster than goosed mooses, and two, they both race the new GT BMX frame. These first class frames are 4130 chrome-moly, and available with either European or American bottom brackets. Weight with the European bottom bracket is a trim 3 pounds 4 ounces. Get 'em in blue, black, red, or chrome from: GT BMX, 2024 East Lincoln Ave., Dept. BMXA, Anaheim, CA 92806. Tel: (714) 956-1313. ■



RADICAL REPTILE RACER

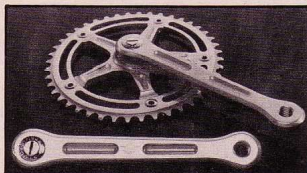
Snake on your ridin' buddies with the new Diamond Back bike kit. This package includes a chrome-moly frame and fork equipped with the latest alloy and chrome-moly components. Just add your choice of wheels, tires, and tubes to rattle the compe-

titition. These high zoot new scoots are available in reptile red, snake belly blue, and take-home chrome. Wholesale and retail inquiries should be directed to: WESTERN STATES IMPORT COMPANY, 7805 Deering Ave., Dept. BMXA, Canoga Park, CA 91304. Tel: (213) 340-7851. ■



STAR CRUISER

Space travel in the 1980's is made easy with the Bassett Star Cruiser. Take a gaze at the Star's classic styling and cosmic colors. You'll notice that the mild steel heli-arc welded frame accepts all standard components. Full-flight finishes are out of this world with yellow, black, candy red, candy blue, and cruisable chrome. Be rocketed to super stardom on a Bassett Star Cruiser. For more info contact your nearest dealer on earth or: BASSETT RACING, 1911 Betmor Lane, Dept. BMXA, Anaheim, CA 92805. Tel: (714) 634-0811. ■



GIPIEMME CRANKS IT

Throughout the history of motocross, the Europeans have always had the trickiest equipment. So what's new? Well, for one thing, the trick Italian Gipiemme crankset. These forged aluminum sets are available in two models: Track (1/2x1/8), and Special (1/2x3/32). The Track model is offered in one length, 170mm, with sprockets from 42 to 45 teeth, while the Special comes in 167 1/2, 170, 172 1/2, 175, 177 1/2mm, with sprocket selection from 39 to 60 teeth. Momma mia, thats a one fine lookin' crankset. Available from your European connection: TEAM CHICAGO, 4646 North Kilpatrick Ave., Dept BMXA, Chicago, IL 60630. Tel: (312) 725-2115. ■

continued on page 22

Kashimax

Kashima Saddle Mfg. Co., Ltd.

AVAILABLE FROM:

B One Distributors
1149 South King Street
Honolulu, HI 96814
(808) 537-6088

John T. Bill Company
4116 San Fernando Road
Glendale, CA 91204
(213) 245-7156

Clayton Cycle Company
5165 Martin Luther King
St. Louis, MO 63113
(314) 367-1312

CYC Distributing
1617 Rosecrans Ave.
Gardena, CA 90249
(213) 538-2824

Cycle Industries Corp., Ltd.
2763 13th Avenue, SW
Seattle, WA 98134
(206) 623-2212

Cycles Peugeot USA, Inc.
18805 Laurel Park Road
Compton, CA 90220
(213) 774-5454

Hans Johnsen Co.
8901 Chancellor Row
Dallas, TX 75247
(214) 631-1560

Laguna Distributors
23302 Vista Grande
Laguna Hills, CA 92653
(714) 770-3131

Lawee, Inc.
899 Cowles
Long Beach, CA 90813
(213) 437-6478

Miami Bicycle & Supply
407 S W 71st Avenue
Miami, FL 33144
(305) 261-0361

Moore's Cycle & Supply
1537 W Main
Oklahoma City, OK 73106
(405) 236-3785

Shofer's World of Wheels
8380 Balt.-Washington Blvd.
Jessup, MD 20794
(301) 953-9443

Tiger Cycle Mfg., Inc.
132 Wilson Street
Redwood City, CA 94063
(415) 366-3848

Windsor Enterprises, Inc.
2702 S. Port Way, Unit A
National City, CA 92050
(714) 474-1569

Flash!—Top Factory Teams ride
Kashimax. Team Shimano and SE
Racing pros chose the Kashimax
MX for national competition!

The Kashimax Motocross Saddle



It's built for speed and it's built to last like no other saddle, because top competition riders won't sit for anything less. They love the light

weight, just 470 grams including the clamp. They can't bust it, even with its factory-drilled ventilation, because the Kashimax MX is molded in genuine, 100% nylon 6. And a rugged, chromed steel subframe and patented safety seatclamp keep it securely in place, jump after jump. Top it off with four totally hot colors—red, blue, yellow and black—and the Kashimax MX looks as tough as it's built.

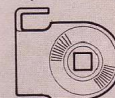
So race the seat that can't be beat. Kashimax MX.

Kashima Saddle Mfg. Co., Ltd.
No. 30-3, 3-Chome, Hannan-Cho,
Abeno-ku, Osaka, Japan

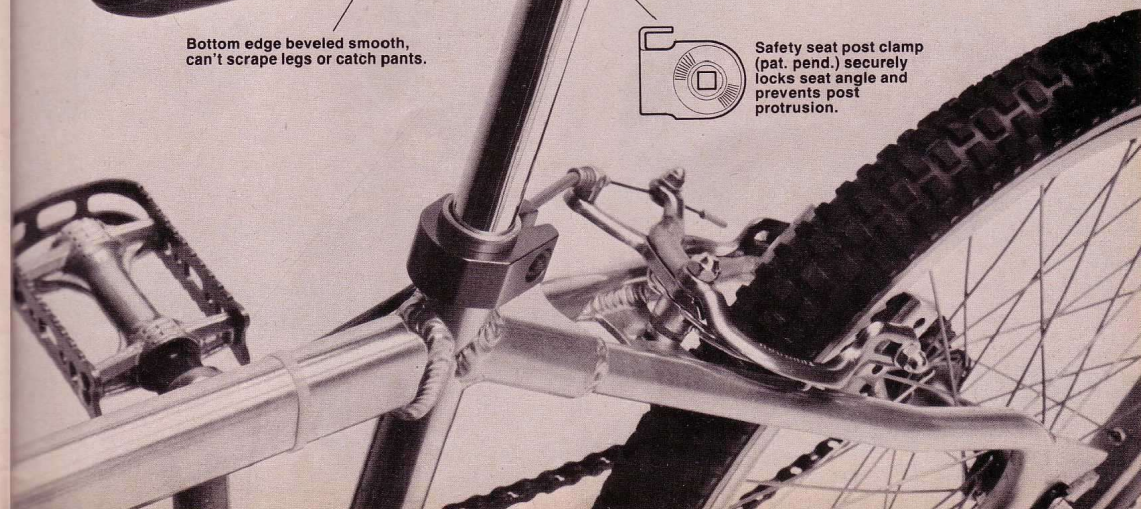
Seat base color—molded in pure nylon 6 for optimum strength.

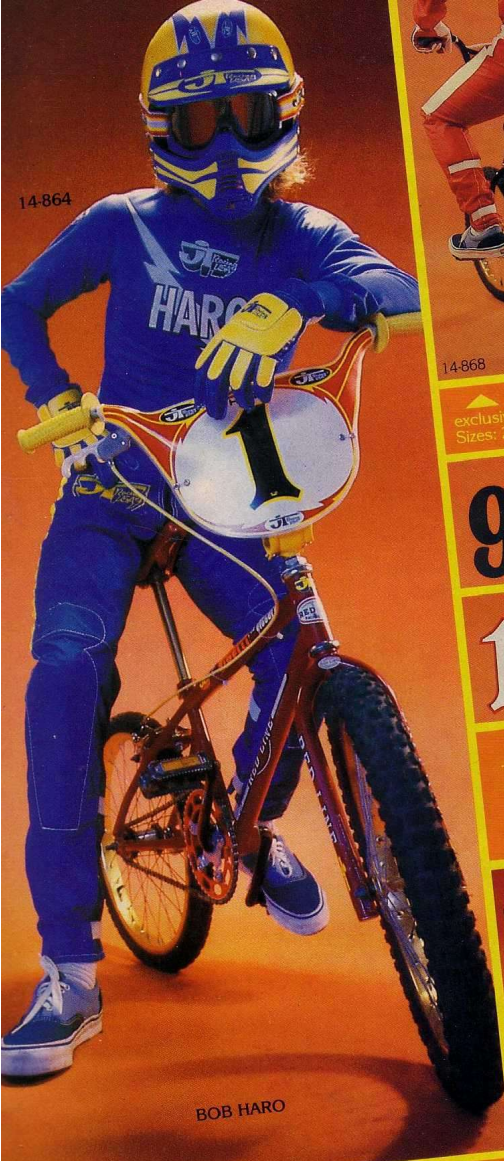
Factory-drilled holes for light weight and ventilation.

Bottom edge beveled smooth, can't scrape legs or catch pants.



Safety seat post clamp (pat. pend.) securely locks seat angle and prevents post protrusion.





JT BMX PANTS — Features built-in shin guard, exclusive "calf wrap"™ system, and tapered lower calf. Waist Sizes: 22, 24, 26, 28, 30, 32, 34 \$48.95

98765 09-101
13456 09-102

JT DIRT DIGITS — Trick and colorful and numbers come in Black/yellow, Black/red, White/red, solid white and solid black. (In paks of ten) Specify number and color \$4.95



JT HARO PLATE — The hot new set up for the trick track bikes. Specify Part No. and color \$9.95



JT BOLTS — Specify Color 05-200 ... \$.95
 05-201 ... \$1.25 05-202 ... \$1.50



JT BMX GRIPS — Special design allows a sure grip and more control. Available in Red, Black, Blue or Yellow \$3.95

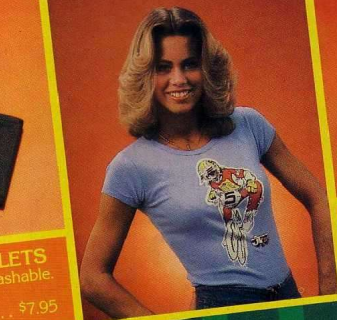
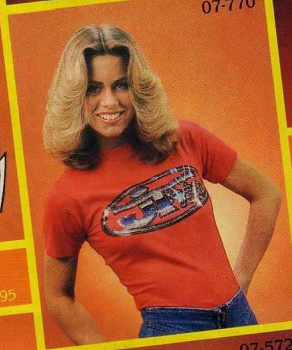
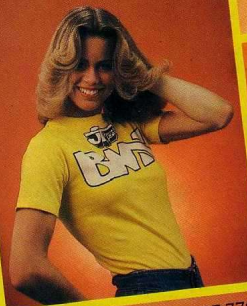


JT STICKIES — 19 Super-Trick stickers Only \$3.95



JT WONDER WALLETS — Fantastic, colorful and washable. Available in colors shown. Only \$7.95

JT TEASE SHIRTS — Mens (s, m, l and xl) \$7.95
 Womens (s, m and l) \$5.50
 Kids (s, m and l) \$5.50
 Your Choice Red, Yellow or Blue



JT TEAM HATS — 02-105 Your choice of team hats, specify color \$6.50



JT HALFBREED™ — Nylon vented and lambskin Sizes 8,9,10,11 \$24.50
 Kids 5,6,7 \$21.65
JT CHAMPION II — All leather inside palm padding Sizes 8,9,10 and 11 \$30.50
 Kids 5,6, and 7 \$22.65



JT VISOR 04-109 — Red, White, Blue, or Yellow \$4.95
JT MOUTHGUARD 04-175 — Red, Whi, Yel, Blu or Blk \$8.95



JT TEAM SCREEN — Fully adjustable in four color combos. Black/Yellow, Blue/Yellow, Red/Yellow and Red/White \$39.50

JT Racing USA
WE GOT'CHA COVERED

BMX

Name _____
 Address _____
 City/State/Zip _____
 Amt. Enclosed MC VISA AM. EXPRESS
 Exp. Date _____ Credit Card No. _____
ALL PREPAID AND COD ORDERS SENT FREIGHT COLLECT!
 Send money order to avoid delay in shipping. Allow 45 days on orders with personal checks. Orders less than \$10.00 add \$1.50 ship. per lb. For super-fast delivery call (714) 427-0971. BMXA/JAM. DEALER: Send for free catalog on letterhead.

ITEM #	QUAN.	SIZE	COLOR	AMOUNT

CUSTOM LETTERING — NO CUSTOM LETTERING ON C.O.D.
 Name Applied _____ Number Applied _____
 Cost/Letter _____ Total Cost _____
 Calif. residents add 6% sales tax.

JT RACING USA, 303 West 35th Street
 Ste. D, National City, CA 92050
 Telex No. 697-869

Tracker 100

THERE'S ONLY ONE WORD FOR GRIPS



Tracker BMX series 100

Tracker cruising or touring grips series 500
2 grips w/open ends
2 grips w/closed ends

Colors available • Blue • Black • Yellow • Red

THE MOST COMFORTABLE GRIP FOR COMPETITION RIDING
Designed for the Pros • Designed by the Pros
Trackers are now available to everyone
If you want...
Toughness • Comfort • Easy Riding
Durability (lasts five times longer)
Track Accepted • Guaranteed
... you want TRACKER

Distributor and Dealer inquiries invited—

TRACKER Enterprises

1017 E. BEDMAR ST. • CARSON, CA 90746 • (213) 635-7616

PRODUCTS

continued from page 18



REGINA CHAIN REACTIONS

Having trubs with those cheap chains of yours snapping? Does the possibility of plunging toward the top tube make you paranoid? Before you get sore, young hero, get a hot new Regina MX chain. These chains will be available in 1/2 x 1/8 inch pitch with 112 links. Having been designed especially for MX use, these new chains have extra ordinary resistance to shocks and working stress. They will be offered in three sparkling finishes; gold and black, copper and black, nickel and black, and will be appropriately called MX-1, MX-2, and MX-3. Avoid possible pain and get this chain from: CAMPAGNOLO U.S.A., P.O. Box 37426, Dept. BMXA, Houston, TX 77026. Tel: (713) 661-9132. ■



BEL-RAY MOTION LOTION

The good ol' boys over at Bel-Ray claim their new 6 in 1 lube has 1001 uses, and you know what? ... we believe 'em. 6 in 1 works as a penetrating and lubricating fluid, protects against nasty rust and corrosion, displaces water, reduces friction, and if all that weren't enough, it also cleans while it lubricates. This stuff is mandatory for keepin' the ol' 'scoot rollin', so break loose with the juice in the bright orange and blue can from: BEL-RAY COMPANY, INC., P.O. Box 526, Dept. BMXA, Farmingdale, NJ 07727. Tel: (201) 936-2421. ■

WORLD'S LARGEST BMX SPECIALIST

POWERLITE

Labels: NYLON SEAT, OAKLEY GRIPS, DIA-COMPE BRAKES, CHENG SHIN TIRES, ALLOY WHEELS, SUGINO ALLOY SUPER MAXY MKS CONTOUR BONZAI, ALLOY SEAT POST & CLAMP, CRO-MOLY FORK.

MODEL NO. 1 RACING BIKE

POWERLITE

Labels: NYLON SEAT, FINISH LINE GRIPS, CHENG SHIN TIRES, TUFF WHEELS I, SUGINO ALLOY SUPER MAXY MKS CONTOUR BONZAI, HEAT TREATED CRANK, CRO-MOLY FORK.

MODEL NO. 2 TUFF WHEEL

COLORED SPOKES

10-5/8" BLUE, RED, YELLOW
ELECTRO TINT COLORED SPOKES RED, BLUE, GOLD, BLACK, WHITE

NYLON PADDED SEAT
ONLY 20 OZ.

POWERLITE

BELOW 5 LBS

POWERLITE STD

JR PRO

BULLSEYE

RED, GOLD, BLUE, BLACK, SILVER
MODEL A-5 SEALED BB SET

RED, BLUE, GOLD, SILVER
ALLOY ANODIZED RACING FRAMES

SUGINO

ANODIZED BLUE, RED, GOLD
SUPER MAXY CRANKS: 170 & 180mm ALLOY SPROCKETS: 40T - 48T
ONLY 4 LB 7 OZ FOR THE SET (BOTH WHEELS & 2 TIRES/TUBES)

ACS STOKER

CRO-MOLY FORKS
TOUGH NYLON - BASH 'EM & THRASH 'EM
ALLOY MAGS AVAILABLE

TUFF WHEEL I & II

NEW FREEWHEEL
THEY DON'T RUST, BUST OR COLLECT DUST
REAR WHEEL: FREEWHEEL OR COASTER

SIDEWINDER CRO-MOLY
MCS "ZF" STEM
CAL WINNER CRO-MOLY

SEW-UP TIRES

RED LINE

TEAM CHROME AVAILABLE
ALL CRO-MOLY RACING FRAMES
RED, BLUE, BLACK, WHITE, YELLOW

RED LINE

THE BRUTE - IT GRIPS
IT WORKS CHECK IT OUT

RED LINE

Labels: TAHEI NYLON, ANODIZED DIA-COMPE SUNTOUR FREEWHEEL, OAKLEYS, ALLOY SEAT POST & CLAMP, SUGINO ALLOY CRANK MKS BONZAI, MILD STEEL V/BAR, MX-II CRO-MOLY FRAME, CRO-MOLY FORK.

BLUE, YELLOW, RED, BLACK, WHITE & TEAM CHROME



EVERYTHING BICYCLES
15000 STAFF COURT GARDENA, CA 90248
Dealers and distributors phone
Craig, Ron or Howie NOW!
(213) 532-7261

ANAHEIM STADIUM MOTOCROSS FINALS

DEMO

The sport of BMX is in some ways like a religion. Only the people involved know how neat it really is . . . and they can't keep their big mouths shut, they just HAVE to spread the gospel.

For this reason, when Mike Goodwin of Stadium Motorsports Corporation offered Linn Kastan of Red Line Engineering ten minutes right smack dab in the middle of the Anaheim Coca-Cola (motorcycle) Motocross Finals, he,

Linn Kastan, jumped on it . . . even though the cost for the ten minutes was higher than Stu Thomsen can jump. The theory was that with a full house of 50,000 people sitting there, all of whom were to some degree interested in the related sport of motorcycle motocross, the chances of winning a few converts over to BMX were pretty good. Also, as a kicker, if the demo went well there was a good possibility of putting together some BMX races in conjunction with the motorcycle stadium series in 1980.

So Linn Kastan wiggled the ABA into orchestrating the demo.

How successful was it?

Who knows? How do you measure something like this?

But even if you can't measure the results of individual efforts like this, you CAN measure the collective results of everybody from the youngest BMX racer to the biggest BMX manufacturer preaching the gospel.

And to see these results, just look around you.

LATE FLASH: According to Linn Kastan of Red Line, there is now a good possibility of BMX involvement in the Superbowl of Motocross at the L.A. Coliseum later this year.



BW's improve your racing image

Ask Tinker

JERSEYS

Custom-made jerseys are available in any color combination and quantities desired. When your team or shop is interested in jerseys, send us a drawing showing detailed colors, silk-screening, and quantity and let us quote you. Specify 100% nylon mesh or 100% nylon double-knit solid material, or a combination of both. (Minimum order of six)

PANTS

These new BMX PANTS are made of top quality, heavy-duty, double-stitched nylon and have been re-styled with a special SPANDEX panel inside the leg that breathes and stretches. They are designed with padded CORDURA nylon knees, padded shins and sewn-in hip pads. The legs are fitted with VELCRO closures for your comfort and safety. Order blue, black, red, yellow, gold, white, green, dark brown or orange nylon, with your choice of contrasting side stripes. Custom lettering available.

Send 50¢ for brochure and sticker.



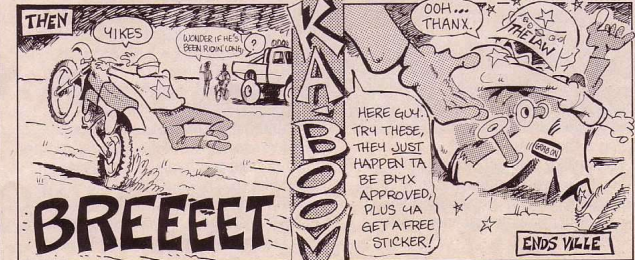
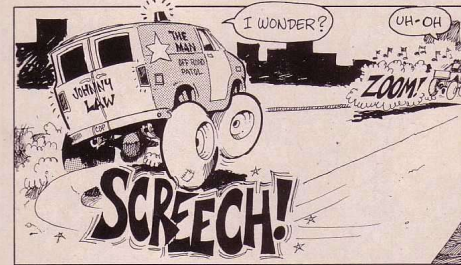
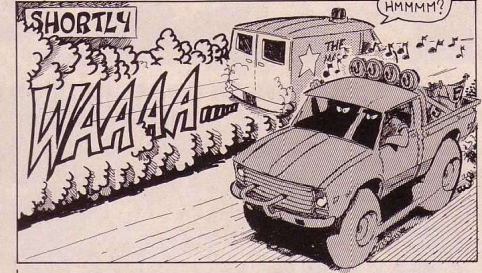
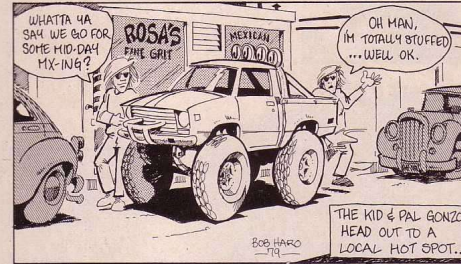
BILL WALTERS LEATHERS
7359 Varma Avenue
No. Hollywood, CA 91605
(213) 982-3738



EPISODES
OF

THE GRAB ON KID

PRODUCTS



MANUFACTURED BY NEOTECH • Route 4 • Walla Walla • WA 99362 • (509) 529-9800

THE INSCRUTABLE ORIENTAL ART OF . . .

SAVING FACE

FOR ALL YOU FASHION CONSCIOUS DUDES, HERE'S
SOME SUPER STYLIN' TO KEEP YOU SMILIN'



The fearsome Karate-trained mouser, Moto Cat, just loves having his picture taken. These guys don't realize they're messing with fur-covered dynamite.

AN OSBORN/BRADLEY EFFORT

Here are a few reasons for wearing face protection:

- If you have a low threshold of pain.
- If you're a handsome devil and prefer keeping it that way.
- If you dislike the taste of bugs.
- If you're scared ignorant before your moto and don't want anybody to know.
- If you enjoy having your nose pretty much right where it is.

If you're ugly and want to hide it.
If you prefer spending your rat-hole money on trick equipment more than on dental bills.
If you want to psych out everybody in your moto.

We could have made up a bunch more reasons, like keeping your mother from getting too hyper, or preferring Chicklets to Cheng Shins. But I think we've made our point.

And let's face it, if you look better, you feel better. And if you feel better,

you ride better. And the confidence you gain from knowing that your face isn't going to change radically, doesn't hurt your speed either.

So, knowing that our reasoning is sound and our logic flawless, we suspect that everybody out there is chompin' at the bit to get over to their local BMX shop and buy some kind of face protection. So here's a rundown on what's hot, how much it costs, colors, lense selection, and all that kind of stuff.



JT'S EUROPEAN FACE FASHIONS

Finland's finest face protection is produced by Sinisalo, then imported to the U.S. by JT Racing, who markets it as the Mikkola Replica rock guard. This popular face guard was named after and developed by the ex-500cc World Motocross Champion, Heikki Mikkola. This high impact plastic guard features limited frontal venting, vinyl safety ribbing, and four-snap mounting with rivet-mounting accommodations. They're available in white with blue graphic striping and red ribbing. They cost around 9 bucks. JT RACING, 303 West 35th St., Suite D, Dept. BMXA, National City, CA 92050. Tel: (714) 427-0971. ■

FACE



MXL GOGGLES

MXL goggles are available in three separate models; the X-70, X-800, and the X-600 which is pictured. All three models come in red, white, blue, black, and yellow frame colors. The X-600s feature comfortable foam-backed frames and a wide adjustable strap. Lenses are impact-resistant polycarbonate. These distortion-free lenses come in clear, yellow, and smoke. The cost is around \$16. NATIONAL HYDRON, P.O. Box 222, Dept. BMXA, East Petersburg, PA 17520. Tel: (717) 569-8711. ■



GREAT SCOTT!

Scott face masks and goggles allow even the most terrified rider to appear calm, cool, and collected in radical situations. Wide angle frames in red, white, blue, yellow, and orange have large vents and a flashy adjustable helmet strap. Color coordinated masks have slotted vents with replaceable foam filters. Lenses are available in clear, yellow, smoke, amber, light blue, and rose. At somewhere around 16 bucks for the goggles and 7 dollars for the mask, it's not what you'd call gettin' away Scott free. Alas... the price you pay for BMX'n in style! SCOTT, U.S.A., Dept. BMXA, Sun Valley, ID 83353. Tel: (208) 726-4541. ■



SKYWAY'S FAMOUS FOAM-FIT FACE MASK

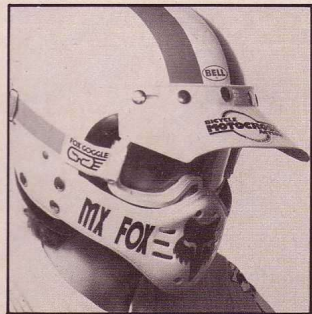
Skyway's one-piece goggle-mask deal is super light and super simple. The Zytel nylon mask comes in five fantabulous colors; red, white, blue, black, and mellow yellow. Mask ventilation consists of some mean lookin' vents below the nose. The

goggles have no vents but the foam backing keeps fogging to a minimum. Clear, smoke, and polarized lenses are available. Unique Velcro helmet attachment really rips. Cost is about 12 dollars. SKYWAY RECREATIONAL PRODUCTS, 4451 Caterpillar Road, Dept. BMXA, Redding, CA 96001. Tel: (916) 243-5151. ■



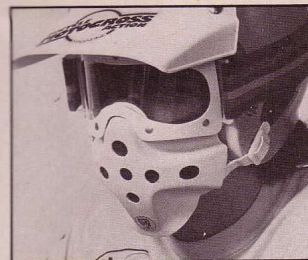
JOFA PUCK GUARD

No self-respecting motocrosser would be caught in public without his trick European Jofa mouth guard. Jofas are manufactured in motocross's capital city, Malung, Sweden. Originally Jofa mouth guards were used by hockey players to defend against the ol' puck-in-the-mouth shot. Available for the modern motocrosser in red, blue, yellow, and white. High impact polycarbonate plastic, flow-through ventilation, durable vinyl strap, and upper and lower lip cushions have made this guard a classic favorite. Comes complete with helmet mounting snaps at about 6 dollars. HALLMAN RACING, 1300 Hill Street, Dept. BMXA, El Cajon, CA 92020. Tel: (714) 422-0431. ■



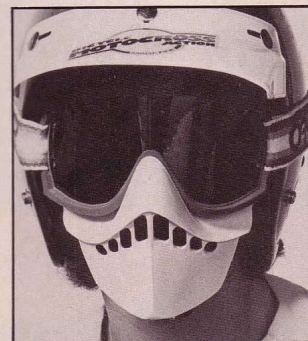
FOXY FACE PROTECTION

If you want to look foxy out at the track, here's your answer... the new Moto-X Fox goggles and the Superfox face guard. The goggles are fully vented and have a wide adjustable strap. The frames come in yellow and white. The lenses come in clear, yellow, polarized, and tear-offs. The Superfox face guard is a sano lookin' job with full frontal venting, contrasting colored vinyl ribbing, and three snaps on each side for secure mounting. With foxy graphics and a wide color assortment, the Superfox guard turns heads as well as protects 'em. Superfox guard, around 11 bucks. Fox goggles, youth model, about 8 dollars, adult model, about 15 bucks. MOTO-X FOX, 520 McGlincy Lane, Dept. BMXA, Campbell, CA 95008. Tel: (408) 371-1221. ■



SPACE RACE FACE

Stylish space travel is made easy with this ABS impact-resistant plastic goggle-mask combination. The goggle area has a formed-foam fit and the mask area has a foam filter behind the bullet hole vents. Colors available are: red, blue, black, white, and ol' yaller. Lenses are quick-change 7-snappers that come clear, yellow, smoke, and polarized. Tear-offs and foam filter replacements are available. A wide colorful strap holds this outfit in place. Cost is about 17 frogskins. THOUGHTS AND ACTION, INC., 22212-2 Germain Street, Dept. BMXA, Chatsworth, CA 91311. Tel: (303) 539-3934. ■



STOKED ON OAKLEY

Simply put, this is state-of-the-art stuff. The Oakley goggle frames are made of yellow, red, or blue poly vinyl chloride. The lenses are bulletproof Lexan and come clear, mirrored, polarized, or tear-off. The strap is wide, adjustable, and as colorful as a Mexican blanket. Oakley goggles go for about 13 dollars. The Oakley "Star Wars" replica face mask is made of polycarbonate, is well ventilated, and has a foam dust filter which everybody in BMX takes out because it restricts breathing. Colors available are: red, yellow, white, and blue. The masks go for around 8 bucks. Dog-gonit, Oakley has done with face masks what they did with grips a few years ago. OAKLEY, 23086 Terra Drive, Dept. BMXA, Laguna Hills, CA 92653. Tel: (714) 951-0991. ■ *continued on page 35*

DIE CUT STICKER-PACK	\$1.00
OAKLEY PATCH	\$2.00
OAKLEY POSTER	\$3.00

OAKLEY

23086 Terra Drive Laguna Hills, Ca. 92653

Pedaler's EAST

The Professional BMX Racing Store

- OWNED AND OPERATED BY PROS, Sal Zeuner, NBL National No. 1, and Terry Zeuner, 1980 New Jersey State Champ
- FULLY STOCKED WITH PROFESSIONAL EQUIPMENT—bikes, frames, accessories and a full line of racing clothes
- 24 HOUR U.P.S. SERVICE
- HOT LINE FOR RACING EVENTS

PEDALER'S EAST • (609) 691-9162
24 Park Ave., Vineland, NJ 08360

KUWAHARA

THE NEW FORCE IN BMX



KUWAHARA leathers now available.

The racing machine that smokes on the track and on the street. Race proven geometry delivers radical maneuvering ability assuring fast starts with controlled jumps and turns.

The **KUWAHARA** frame and fork is produced entirely from aircraft quality chrome-moly tubing. Equipped with the tough and lightweight alloy parts PROS race with: Sun Tour, DiaCompe, Taihei, MKS Bonsai, Ukai shiny-side box rims.

The elegant finish (black, blue & white) combined with all that anodized equipment will blow your mind and blind your competition.

Unbelievable! This bullet-proof bike only costs about \$290 at the hottest BMX Bike Shops. **KUWAHARA**, the serious racing machine from Japan, the land of Yamaha, Suzuki, Kawasaki & Honda.

KUWAHARA

Dealers & Distributors contact:

GET ON IT!

EVERYTHING BICYCLES
15000 Staff Court
Gardena, CA 90248 (213) 328-4222



FACE

continued from page 31



SUPERCROSS SUPER GUARD

JT's very own solution to dirty mouth pollution is this impact resistant four-snap Supercross guard. The Supercross features full frontal venting, clean smooth edges, rivet-mounting holes, and super stadium styling. Colors are red, white, blue, black, yellow, with team color coordinated graphics. These buggers go for about 9 bucks. JT RACING, 303 West 35th St., Suite D, Dept. BMXA, National City, CA 92050. Tel: (714) 427-0971. ■

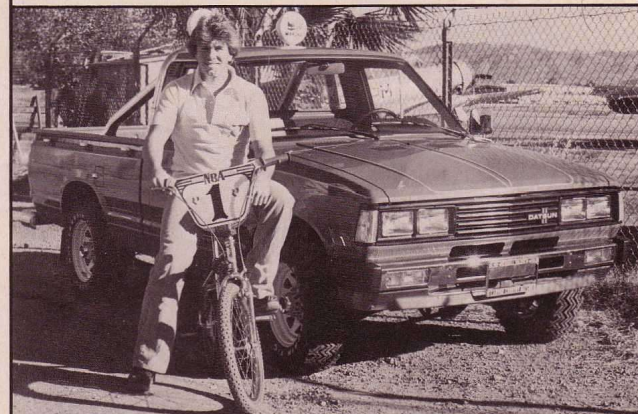


GOOD AS GOLD GOGGLES

Just by the name you'd think Gold Medal goggles would be expensive, but they're not. For somewhere around 14 frogskins you'll get a stylish, proven Malcolm Smith product.

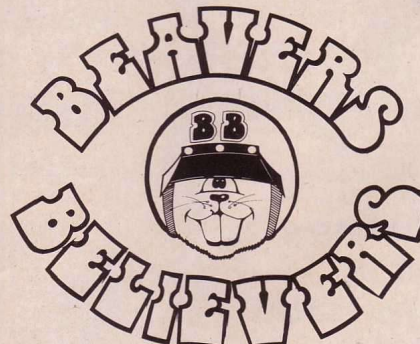
Both goggles and mask have all kinds of foam-filtered vents to keep you and your goggles well aerated. The large frames fit easily over glasses and come in patriotic red, blue, and yellow. Great lens selection of amber, smoke, clear, mirrored, polarized, and tear-offs keep you covered in all climatic conditions. Goggle and mask available together or separately. The mask by itself goes for about 8 bucks. MALCOLM SMITH RACING PRODUCTS, 888 Marlborough, Dept. BMXA, Riverside, CA 92507. Tel: (714) 686-1006. ■

CONGRATULATIONS TO OUR NATIONAL CHAMP, SCOTT CLARK



ROBINSON RACING PRODUCTS
7017 IRONDALE AVE., CANOGA PARK, CA 91306
(213) 992-0247

Who are



They're the Southern California Pros and winning riders who trust the professional people at Beavers to maintain and repair their racing machines. Ask them why.

Stompin' Stu Thomsen • P.K. Ripper • Scot OM-1 • Rod Beckering
Seth Buccierri • Scott Clark • Bob Woods • Mark Wegner • Gary Renteria
Anthony Sewell • Kevin Jackson • Don Atherton • Bobby Encinas • Greg Hill

We know what's happening in BMX. Come see us or call our factory consultation service (213) 881-3308

BEAVERS BICYCLES, 19533 Ventura Blvd., Tarzana, CA 91356

See the new
DG BMX frame race
kit at your local dealer

Get pumped
Get pumped
Get pumped
Get pumped



SEND \$1.50 FOR THE TOTAL BMX
CATALOG FROM DG

NAME _____
ADDRESS _____
CITY _____ STATE _____ ZIP _____

DG BMX · 9530 Dowdy Dr., Suite A, San Diego, CA 92126, (714) 566-7321

FACE



MXL MASK

Look mean, breathe clean, and be seen in this goggle-mask combo from MXL. This PVC plastic unit features foam-filtered vents, a wide adjustable strap, and functional styling. MXL uses only polycarbonate lenses, which they claim are 17 times more scratch resistant than conventional lenses. Clear, smoke, yellow, and polarized are the lens colors available. The goggle-mask combo comes in red, white, blue, black, and yellow for around \$17. NATIONAL HYDRON, P.O. Box 222, Dept. BMXA, East Petersburg, PA 17520. Tel: (717) 569-8711. ■



SKYWAY FOAM FIT GOGGLES

Skyway's goggles are basically the same as their face mask models. Colorful Zytel plastic frames, combined with super foam fit, make for an extremely lightweight, fine fitting unit. Velcro helmet mounting tabs allow for quick and easy adjustment or removal. Frames come in red, white, blue, black, or yellow. Lenses are offered in clear, smoke, and polarized. Priced around 9 bucks. SKYWAY RECREATIONAL PRODUCTS, 4451 Caterpillar Road, Dept. BMXA, Redding, CA 96001. Tel: (916) 243-5151. ■

BICYCLE MOTOCROSS ACTION



TRICK RIDE BY BOBBY ENCINAS. TRICK HELMET BY PRO-TEC.

People tell Bobby Encinas that he's got rocks in his head for trying a stunt like this.

And, without a good helmet, that's exactly what he would have. No wonder Bobby rides with the Pro-tec™ BMX helmet.

This helmet is strong enough to come bouncing back from even the worst wipe-out. Yet it's surprisingly lightweight. Less than 16 ounces.

That's about two pounds less than the average motorcycle-type helmet. And that's two less pounds you have to drag across the finish line.

Of course, it takes more than light weight and strength to impress

Bobby Encinas. It takes comfort. That's another thing the Pro-tec BMX helmet has plenty of. It has two layers of shock-

absorbing foam for extra cushioning. Plenty of ventilation ports to help you keep your cool. And the Pro-tec BMX helmet doesn't block your hearing. So you can keep an ear out for riders coming up from behind.

All in all, there's no better helmet for BMX than Pro-tec. So don't be swayed by some hot-dog looking motorcycle helmet the next time you buy headgear. Instead, do what Bobby Encinas does. Use your head.



Pro-tec™ Inc.
11108 Northrup Way/Bellevue, WA 98004/(206) 828-6595



Features:

- Slides on and off easily
- Does not damage bike
- Great for displaying bike
- Convenient
- Portable
- Economical

At home or at the track...

Dax Stands!

For more information contact:
SHOWA INDUSTRIES LTD. • 1-6-Chome • Nishikikui-cho • Nishi-Ku, Nagoya, JAPAN

The heartwarming yet exciting saga of the largest BMX race so far . . .
 Wherein Bodie Cook changed BMX history—twice . . .
 and Stu and Jason both tripled . . .
 and the rumble of an avalanche was heard across the nation.



After an entire year of racing, only 21 points separated these three hombres in their quest for the ABA National No. 1 plate. Kyle Fleming, Lee Medlin, and the Avalanche . . . Richie Anderson.

ABA★DG GRAND NATIONALS

BY THE WHOLE DANG MFM STAFF
 (EXCEPT MOTO CAT)

November 3, 1979.
 Horseman's Park.
 Las Vegas, Nevada.

The ABA/DG Grand Nationals.
 This race was the largest in the
 history of BMX. Larger than Indy '78,
 the previous record holder. Larger

than last year's Mongoose Grand
 Nationals. Larger than any BMX race.
 Ever. Anywhere.

The number of sign-ups was
 staggering. Scary. Awesome.

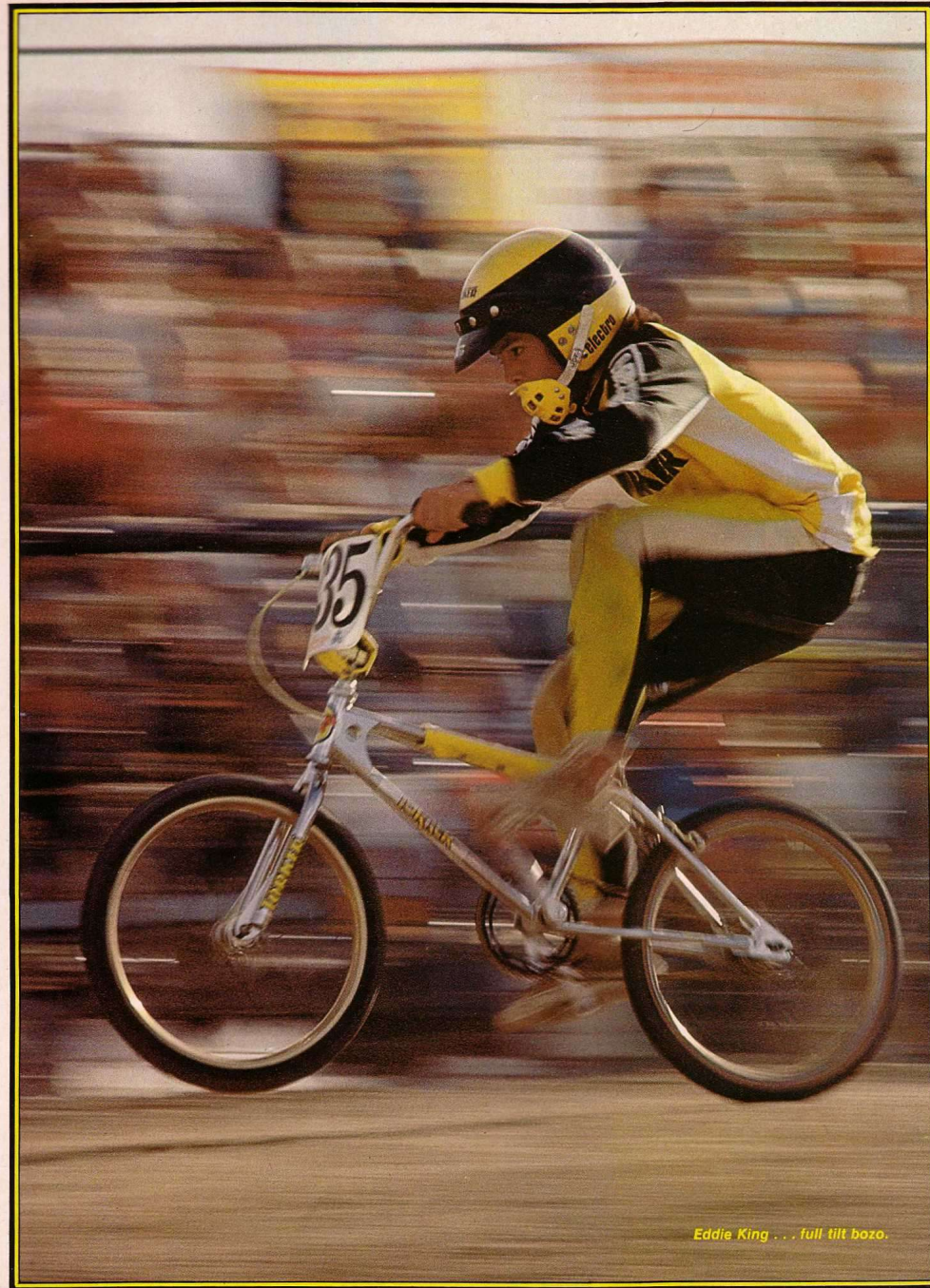
1284 sign-ups. Probably 1000 riders.

The Indy '79 race at the end of
 December may top it, but at this point
 in time, the record is official.

In addition to the mail-in entries, post
 entries had chewed up eight hours the
 day before the race, and another three
 hours on the morning of the race.

When sign-ups were complete, and
 the ABA officials realized they had a
 monster race on their hands, they did
 not panic, they did not over-react.

continued on page 43



Eddie King . . . full tilt bozo.



At Las Vegas not only did Stu triple, but he won the BICYCLE MOTOCROSS ACTION Magazine's Nora Cup too. Coincidentally, lurking in second in this photo is the Flying Dustmop, Sal Zeuner, who also came in second in the Nora Cup voting.

**BICYCLE
MOTOCROSS
ACTION**

TUFF WHEEL II WON'T RUST, BUST OR COLLECT DUST!



THE TOUGHEST,
LIGHTEST
MAG WHEELS
IN THE
WORLD!

For more information
contact your local
BMX dealer.

SKYWAY

TUFF WHEELS

Ride into the
future with
TUFF WHEEL II.

Ride with a winner!

SKYWAY

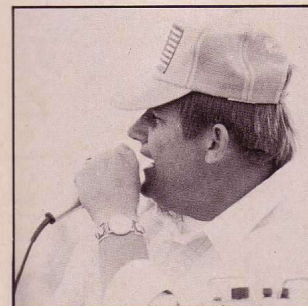
RECREATION PRODUCTS
4451 CATERPILLAR ROAD
REDDING, CALIFORNIA 96001

ABA★DG

continued from page 39

They gathered up the moto-sheets, walked quietly out to the announcing tower, flipped on the mike, and got down to business.

For these ABA officials, business would include 540 motos, 205 semi's, 36 mains, the awarding of 150 trophies,



The Howard Cosell of BMX; a silver-tongued (tubby) devil; eleven straight hours of screech-level announcing; Merle Mennenga . . . the pres of the ABA.

and coping with the ungodly amount of problems and conflicts that would continue throughout this longest day. Cheerfully.

The racers had literally come from the four corners of America . . . from Washington to New Jersey to Florida to Texas to California. An astonishing 20 different states were represented here.

Some of these racers are the best, there to defend their reputations and to finalize their claims to the low-digit ABA national plates. Other racers were there to test themselves against these big guns, to see if they are perhaps national timber themselves. Others were there just to be involved, to be able to say they raced the ABA Grand Nationals.

Others were there for the bucks. These are the mercenaries . . . BMX's soldiers of fortune . . . the elite . . . the Pro's. And they had turned out in battalion strength. Moths to the flame of a \$2500 purse, \$3000 in contingencies, a \$1000 diamond ring, and various other offers of fortune and fame.

Virtually everybody who is anybody was there.

But in this teaming mass of people and purposes, three riders stood alone. For these three riders the fierce year-long battle for the ABA National No. 1 plate had come down to this race. Any one of the three could win it.



There were more riders at this race than you could shake a stick at.

In 1978 the ABA was small potatoes. A lot of people felt that winning the National No. 1 plate then was no big thing. Kyle Fleming, from Arizona and 9 years old at the time, had won it.

But in 1979 the ABA grew into what may very well be the largest BMX sanctioning organization in the world. Most people doubted Kyle's chances of even coming close to the top in '79.

Going into the ABA/DG Grand Nationals, Kyle Fleming was one of the three who could emerge as the National

No. 1 rider. The people who had doubted Kyle's abilities up to this point, were keeping quiet. This guy may be only 10, but he packs some heavy credentials.

Richie Anderson was one of the three. Richie is the fastest 12 year old in the world. We won't even debate this point with anybody. There are a few racers who are close, but there are none better. None. The Avalanche rules.

The third rider was Lee Medlin. Lee

BASSETT RACING

STREET NEAT



Helicore welded steel construction. Available in black, yellow, candy blue, sandy teal and chrome.

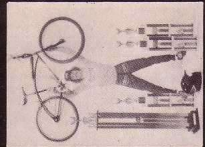
BASSETT RACING INTRODUCES THE ALL NEW

STAR CRUISER FRAME

These race-tested frames will form the heart of a really hot street cruiser. Aside from being fun to ride, cruisers are practical (that appeals to mom and dad). They're comfortable, durable and require very little maintenance. **GET CRUISIN' WITH BASSETT!**

DEALER INQUIRIES INVITED (714) 634-0811

YOU DON'T NEED A BEACH TO GO CRUISIN'



Edan Lewis, winner, MonGosse Grandnationals, Cruiser Class

1911 Belmont Lane, Anaheim, CA 92805 - (714) 634-0811

PLEASE SEND ME A FREE BASSETT RACING STICKER

Name _____

Address _____

City _____

State _____

Offer expires March 30, 1980

Zip _____

ABA★DG



Kyle Fleming came so close . . . but close only counts in horseshoes, hand grenades, and dancing.

is one of the quickest dudes in the 14 expert class, which is probably the toughest class in BMX due to the consistently huge number of sign-ups. Going in, Lee was sitting in first, a scant four points in front of Fleming. But he also had the most handicaps; Rod Beckering, Ron Anderson, Will Scurto, Marty Ehnat, Mike Buff, and like that.

Kyle Fleming was second going in, a skinny 21 points in front of the Avalanche. Lee Medlin was 4 points ahead of Kyle. That's what is generally referred to as a "Cliff-Hanger."

A win at the ABA Grand Nationals is worth 240 points plus the number of racers who signed-up in your class. Second pays 200 points plus the

number of sign-ups. Third pays 160 plus the number in your class.

Points are awarded in age classes only. Points are not awarded in open classes or Trophy Dashes. For these three guys there could be no mistakes today.

The field of honor, the battleground, the path on which these wars would be fought was hard packed, had a tendency to run a bit slippery because of the loose stuff on top, and consisted of what amounted to four short straights with enough jumps and turns thrown in to keep everyone honest.

Most riders were gearing down one tooth on their front sprocket. Competition II skinwall knobbies were the hot tip front tire to maintain some

kind of traction in the slippery turns.

In the Pro class it was bucks up if you were running the right stickers and gear.

There was a TV production company there, filming a segment for a new nationally syndicated program called "Wide World of People."

Well, dog my cats, Martha, this is just like they do it downtown.

Meanwhile, back to our three fearless protagonists . . .

Kyle Fleming, the pride of DG, slipped into the gate for his first 10 expert moto, won it, and transferred to the semi. But so did his Nemesis, Doug Davis, in the very next moto.

In his first 12 expert moto, the Avalanche yawned, stretched, jiggled



It used to be that the micro-midgets just sorta cruised and putted around the track. But not anymore. These little squirts are gettin' serious.



Big John is a salty little dude.

BIKECOLOGY BIKE SHOPS NEW SPRING MX CATALOG

HOT OFF THE PRESS!

FREE!

24 pages crammed with all our juicy top quality BMX products plus...



NEW! IN OUR SPRING '80 EDITION

New Diamond Back Cro-Mo kits
New Red Line MX II Kits
Cycle Pro Macho Frameset
New Steel "V" Bars
New Sun Tour Pedals
Sugino's aluminum Spider
KKT RT Pedals in colors

New SHOTGUN Seat
New Improved Tool Kit
New Cycle Pro Racing Gloves
Pro Tec Helmet
Shimano Freehub
Tuff Wheel II
and more, more

Spring '80 catalog sent automatically to everyone who received our Summer '79 catalog. Not necessary to order Spring edition separately.

Four Pro MX shops in the Los Angeles Area

9101 Olympic Blvd., Beverly Hills
5179 Overland Ave., Culver City
1515 Wilshire Blvd., Santa Monica
4214 Lincoln Blvd., Marina del Rey

Open 7 days:
M-F 10-7
Sat 9-5:30
Sun 10-5:00

BIKECOLOGY MX P.O. Box 1880-A
Santa Monica, CA 90406

Yes! Rush me your FREE 24-page Spring '80 MX catalog.

Spring '80 catalog sent automatically to everyone who received our Summer '79 catalog. Not necessary to order Spring edition separately.

NAME _____

ADDRESS _____

CITY _____

STATE _____ ZIP _____

Allow 2-3 weeks for delivery

the change in his pocket, won by a mile, and transferred.

Medlin DIDN'T transfer in his first expert moto. He got third. The jaws of the vise tightened just a little for Lee.

At an entirely different level, ol' Juicy Jaws, Jason Jensen, was doing his own thing. Either he or his father had devised a way for the scourge of the midget classes, the oppressor of the short people, the tyrant of the little dudes, to go for the first quad in the history of the sport.

You remember that Jase is only 8, right? What he did was enter the 8 and under open class and the 9 novice class (which is legal in the ABA). This meant that if he won both classes he would qualify for both the 8 and under Trophy Dash and the 9-10 Trophy Dash. And if he won both of these, he would have snatched the first quadruple win in history.

Oh, what diabolical tactics! What devious methods! What a scoundrel that turkey is!

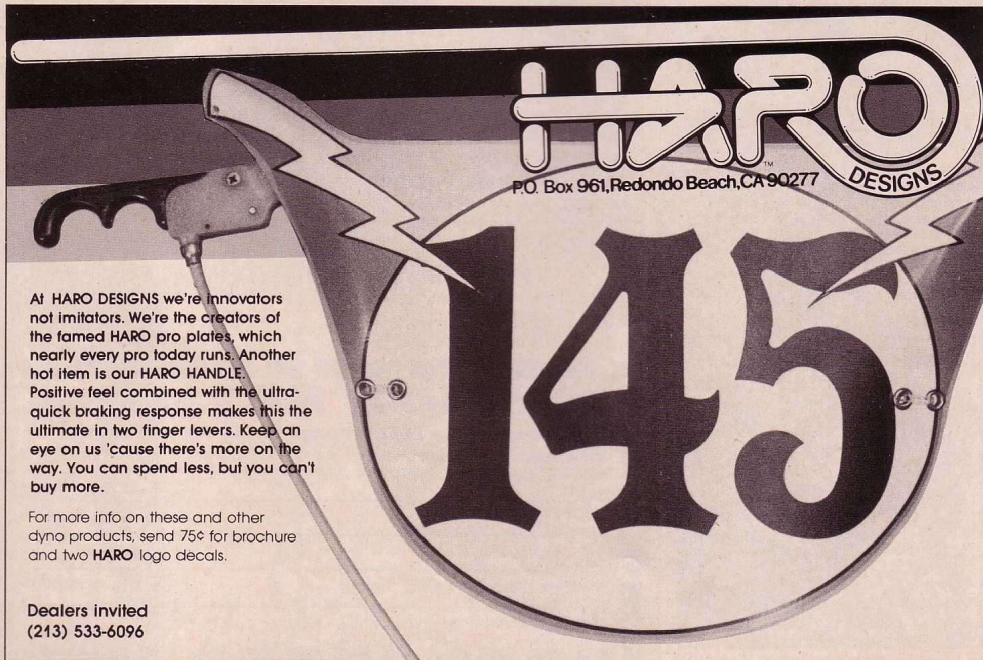
But there was some fly poop in Jason's pepper shaker . . .



Country boy makes good: That wild and crazy guy, John Plant, from Missouri, picked up a full-blown factory ride from DG.



A 9-10 open moto, building steam over the mild first jump. The national tracks are getting too mello lately.



HARO DESIGNS
P.O. Box 961, Redondo Beach, CA 90277

At HARO DESIGNS we're innovators not imitators. We're the creators of the famed HARO pro plates, which nearly every pro today runs. Another hot item is our HARO HANDLE. Positive feel combined with the ultra-quick braking response makes this the ultimate in two finger levers. Keep an eye on us 'cause there's more on the way. You can spend less, but you can't buy more.

For more info on these and other dyno products, send 75¢ for brochure and two HARO logo decals.

Dealers invited
(213) 533-6096

ORDER YOUR PANTS FROM THE "EGO BUILDERS."

#P-101—\$40.95	#K-101—\$74.95 (LETTERS EXTRA)	(VERY SMALL SIZES AVAILABLE)	#S-101—\$45.95	#S-102—\$62.95 (LETTERS EXTRA)	#S-102—\$62.95 (STARS EXTRA)
----------------	-----------------------------------	------------------------------	----------------	-----------------------------------	---------------------------------



LINING IN PANTS ADD \$6.00

HATS: \$3.95
(ADD \$1.00 IF ORDERED SEPARATELY)

NORMAL PANT SIZES: 22-34 WAIST (CALL FOR SPECIAL SIZING)

NYLON COLORS: RED, WHITE, BLUE, BLACK, YELLOW, ORANGE, BROWN

LEATHER COLORS: SEVENTEEN CONTRASTING COLORS AVAILABLE (CALL FOR MORE INFO)

SPECIAL LETTERING AND STRIPES AVAILABLE.

FOR DETAILS AND COST WRITE OR CALL
(213) 699-2349 OR 695-3826

Send coupon with cashier check or money-order to:
VERA'S LEATHERS, 11511 E. Washington Blvd., Dept. BMXA, Whittier, CA 90806

NAME _____	PHONE _____
ADDRESS _____	
CITY _____	STATE _____ ZIP _____
PANT STYLE# _____	WAIST SIZE _____ INSEAM _____
COLOR _____	STRIPE COLOR _____

HATS: QUANTITY AND COLORS
ADD \$3.50 SHIPPING AND HANDLING CALIF. RESIDENTS ADD 6% SALES TAX
TOTAL AMOUNT ENCLOSED \$ _____

DEALER DISCOUNTS AVAILABLE

ALLOW 6-8 WEEKS FOR DELIVERY.

BE GOOD TO YOURSELF...



PUT ON SOME NEW SHOES



INTERNATIONAL

The original Kool-Stop air-cooled safety brake shoe. Now available in colors: Anodized Red, Blue, Gold, Silver, and Black



THE CONTINENTAL

KOOL-STOP SAFETY AT AN AFFORDABLE PRICE



WHEN IT'S YOUR SAFETY, INSIST ON KOOL-STOP ALL WEATHER BRAKE SHOES

For more information contact sales agent:

CYCLE COMPONENTS
P.O. Box 4667, El Monte, CA 91734
(213) 686-2194

Available at most bike shops now
DEALER AND DISTRIBUTOR INQUIRIES INVITED

ABA★DG



The Avalanche. The pride of Patterson Racing. The fastest 12 year old in the world. The new ABA National No. 1 plate owner. Richie Anderson.

And once again we take you back to the three heavies in this confrontation; Lee, Kyle, and the Avalanche . . . each

locked into his own private battle in the semi's. Fleming made it through the semi's

BICYCLE MOTOCROSS ACTION

TITAN UP!



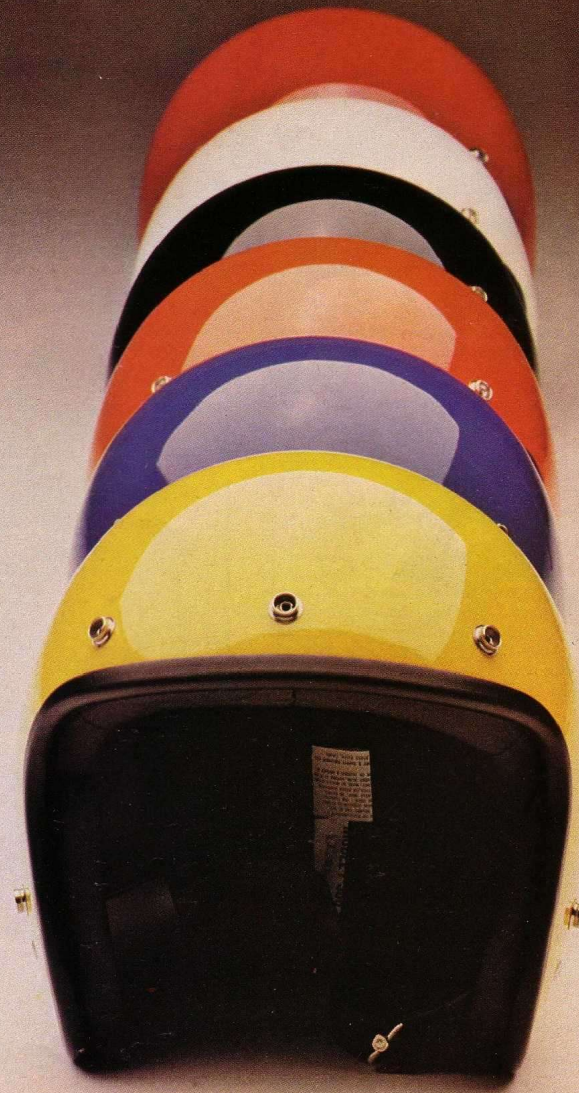
Built tough to take it tough! High impact polycarbonate shell. Thick foam-lined inside. Department of Transportation approved. Plus a palette of colors—red, blue, orange, black, yellow or bright white.

Don't mess with your head. Titan up!



International Sport Equipment
2405 Glover Place
Los Angeles, CA 90031
(213) 227-5757

Dealer & Distributor Inquiries Invited



We make the pads!



Johar of California

RAD PAD

Distributors

AUGUSTIN WHOLESALE DIST. Phoenix, AZ (602) 272-1504	OMEGA IMPORT-EXPORT CO. Norfolk, VA (804) 480-1600
BAUER CYCLE SUPPLY INC. Minneapolis, MN (612) 333-2581	PACIFIC CYCLE SALES Yakima, WA (509) 452-7104
BICYCLES PARTS PACIFIC San Diego, CA (714) 288-1703	PANDA BIKE CO. Concord, CA (415) 798-3580
BIKE BROKERS Fort Myers, FL (813) 895-3232	PETTEE CYCLE SUPPLY Englewood, CO (303) 751-7303
JOHN T. BILL CO. Glendale, CA (213) 245-7156	QUINTIN PRODUCTS Glendale Heights, IL (618) 890-1750
R.H. BROWN CO. INC. Seattle, WA (206) 624-3100	RITWAY PRODUCTS Whittier, CA (213) 893-7075
CLAYTON CYCLE CO. St. Louis, MO (314) 357-1312	SCHWINN SALES EAST INC. Edison, NJ (201) 226-0300
COLUMBUS CYCLE Columbus, OH (614) 224-8493	SCHWINN SALES MID WEST INC. Elk Grove Village, IL (312) 439-6363
C.Y.C. DIST. INC. Gardena, CA (213) 538-2822	SCHWINN SALES SOUTH INC. Atlanta, GA (404) 891-8134
CYCLES PEUGEOT Jacksonville, FL (904) 786-4483	SCHWINN SALES WEST INC. Industry, CA (213) 724-8466
DETROIT CYCLE SUPPLY CO. Detroit, MI (313) 961-7195	SECURITY BICYCLE ACCESSORIES Hempstead, NY (800) 845-2850
D-I-N INDUSTRIES Mt. View, CA (415) 956-8684	S.E. RACING Signal Hill, CA (213) 426-8461
DISTRICT CYCLE SUPPLY CO. Beltsville, MD (301) 937-5580	SHOFERS WORLD OF WHEELS Jessup, MD (301) 792-0773
FARBER CYCLE Detroit, MI (313) 856-2985	STAR PRODUCTS CO. INC. Ridgefield Park, NJ (201) 641-9000
HERBERT L. FLAKE INC. Houston, TX (713) 641-5900	WALTHOUR & HOOD CO. Atlanta, GA (404) 378-2571
HANS JOHNSON CO. Dallas, TX (214) 631-1566	WESTERN STATES IMPORTS CO. Canoga Park, CA (213) 340-7857
LAWEE INC. Long Beach, CA (213) 437-6478	WILSON BICYCLE SALES INC. Union City, CA (415) 458-9171
LOUISVILLE CYCLE SUPPLY Louisville, KY (502) 381-2333	WISCONSIN CYCLE SUPPLY Sheboygan, WI (414) 458-9171
MERRY SALES San Francisco, CA (415) 431-4480	WIL-GO CORP. Santa Clara, CA (408) 248-2314
OLYMPIC SUPPLY CO. Milwaukee, WI (414) 461-8380	WIL-GO INTERMOUNTAIN Denver, CO (303) 371-5153

Distributors only contact
Alan F. Cohan Co.

ABA*DG



O' Juicy Jaws, Jason Jenson . . . jammin' in the jolly junior jumpers' jamboree.



Rod Beckering swooped the 14 expert class and 13-14 Trophy Dash, but he (heavy sigh) bit it in his open class.

untouched . . . but so did Doug Davis. O' Doug was giving Kyle fits even though they had yet to meet in the same moto.

The Avalanche blazed all through his semi's . . . until the last, most important one. He slipped a pedal over a jump, came loose, and almost blew the whole hootenanny right there. But he didn't.

He had so much of a lead he could have stepped off, tied his shoe, made a date with some little sweetie, got back on, and still won by a mile.

But the mistake scared him. A bunch. Medlin was lookin' good in his semi's. But so was Beckering and Ron Anderson, the Avalanche's brother. These guys were going to cause Lee big trubs.

When the smoke of the semi mains finally cleared, all three of our heroes made their expert mains.

The entire year of racing for the ABA National No. 1 plate would be decided in three mains. The jaws of the vise were screwed down tight. Butterflies is not an adequate description of what was going on in these guys' stomachs . . . DC-10's is better.

And now to the nitty-gritty; the mains . . .

In the 8 and under open main, Jason won, one inch in front of Bad Brad Francisco from Washington. Chalk up one for O' Juicy Jaws . . . barely.

In the 10 expert main, Kyle Fleming and Doug Davis ran into heavy weather off the line. This guy named Bodie Cook grabbed the lead like he had no respect for who he was in front of, and won the sucker. Kyle got second, Doug third. Fleming had played his hand, now it was up to Richie and Lee.

The Avalanche rendered the 12 expert class null and void. Anderson and Fleming were now tied. Now it was Lee's turn in the saddle.

Jason sizzled out of the gate, looked back just once at the 9 novice class,

continued on page 68

PRODUCT ANALYSIS



ACS ZYTEL WHEELS

BICYCLE MOTOCROSS ACTION OFFICIAL TEST

INTERESTING NOTICE: When we make arrangements with a company to do a "Product Analysis" on one of their products, the deal is that we will report the cold hard facts as they happen. If it breaks, we say it breaks. Naturally we do as much testing and checking as possible to let our readers know exactly what to expect from a particular product. The point is . . . we tell it like it is.

INITIAL REACTIONS

The ACS Stoker wheels that we pulled out of the shipping carton didn't exactly knock our socks off with their good looks. Fact is, the six-pointed star design seemed just a little hokey.

But when we mounted them on a test bike they looked much better. In fact, they looked great. They really jazzed up the looks of the bike. This is a wheel to warm the meticulously picky heart of a dyed-in-the-wool cafe racer.

RIDING IMPRESSIONS

Our first riding impressions were about the same as our first visual impressions . . . not too red hot. The ACS Stokers are noticeably heavier than the aluminum rims we pulled off the test bike. After weighing them we discovered that they are also heavier than Tuff Wheels.

The additional weight gave the bike a boggish feel at first. Which brings up a point: For flat-out serious racing, alloy rims and light gauge spokes are the ONLY way to go. Nylon wheels and mags just don't cut it. The extra weight adds to the inertia that must be overcome when accelerating or turning.

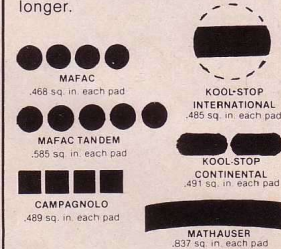
But there's a flip side to this inertia coin. A gyroscopic effect is caused by the increased rotating weight of these wheels which makes wheelies a cinch and tricks a tad easier. It also makes for better jumping because the bike is more predictable and controllable in the air. *continued on page 56*

STICKERS! YOUR CHOICE 50¢

Send 50¢ for each sticker above or \$6 for all 15. Get our new '79 catalog of over 1200 stickers plus 5 free samples (our choice) for only \$2. Send your money and list of what you want to:

STICK-EM UP
1858 Catalina Court, Dept. F
Livermore, CA 94550

DON'T GET RIPPED-OFF when buying premium-priced brake shoes. The braking **SURFACE** is what stops your bike. The larger the surface the better you can stop, especially in rain. And the larger surface resists heat and fading better, and lasts **MUCH** longer.



Insist on getting all you're paying for. With nearly double the braking area, Mathauser's give you far more stopping power and durability for your money.

**THE ORIGINAL, AND STILL THE
BEST HIGH PERFORMANCE
BRAKE SHOE**

Scott/Mathauser Corp.
Box 1333 Sun Valley, Id. 83353

TARTAN BICYCLE SALES

MAIL ORDER
ANYTHING IN
THE LATEST
HOT TRICK STUFF!

Send 50¢
for a complete
price list
and sticker

Call Truckin' Chuck
at (213) 963-0115

TARTAN BICYCLE SALES
2402 Valewood, Dept. BMXA, San Dimas, CA 91773

WOODEN WHEELS BICYCLE SHOP

(302) 368-BIKE
274 E. Main St., Newark, Delaware 19711
(5 minutes from I-95 on Route 273)

BMX IS OUR ONLY BUSINESS

Send a self-addressed stamped envelope for FREE catalog.
(No sales tax to out-of-state residents)
(We will be closed the second two weeks of January.)

WEBCO

The first name in Motocross
218 Main Street / Venice, Calif. 90291



**CHEAP AND
THRASHABLE**
(CHROME-MOLY AND ALLOY)

KUSUKI SLANT STEM

Manufacturer:
KUSUKI MFG. CO.
c/o Sun Tour U.S.A., Inc.
60 Chapin Road
Pine Brook, NJ 07058



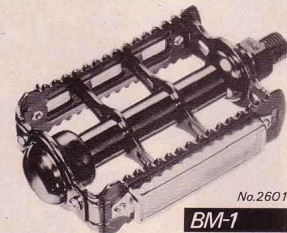
Quick shipments from U.S.A. warehouse! Distributors and dealers contact:

EVERYTHING BICYCLES

15000 Staff Court, Gardena, CA 90248 • (213) 532-7261

CONTOUR

MKS BONZAI MKS

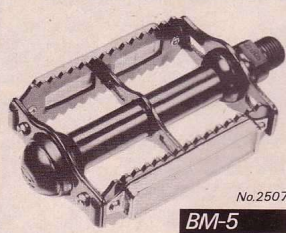


No.2601

BM-1

One piece strong plate system
W/Chrome-moly spindle

Size: 86 mm.
Weight: 630 grm.



No.2507

BM-5

made of steel
W/Chrome-moly spindle.

Size: 82 mm.
Weight: 540 grm.



No.2034

SYLVAN BM-7

made of light alloy, one piece plate,
casting body, W/Chrome-moly spindle.
five color available to order.
RED, GOLD, BLUE, SILVER, BLACK.

Size: 63 mm.
Weight: 360 grm.

MIKASHIMA INDUSTRIAL CO., LTD.
1738 Kohjiya, Tokorozawa, Japan.

●Contact: any bike shops or Suntour USA., Inc.
60 Chapin road, Pine Brook N.J.07058, (201-575-1128)

Who's the Toughest of Them All?



Prove it yourself. Take off on the hottest wheels
made — ACS Stoker molded from "ZYTEL".
It's a test you'll love to take.

No. 1 — You and ACS Stoker

AMERICAN CYCLE SYSTEMS, INC.
Covina, Calif.





Mesinger's latest...
Compares NEW LIGHTER
R3S (Steel) with
plastic competitor

We weighed both seats under the same conditions and the results were— Plastic Competitor seat with top and pad weighed approximately 20 ounces.

The Mesinger R3S seat with top and pad weighed approximately 20 ounces *plus*

THE STRENGTH AND SAFETY OF STEEL.

Check it out, test ride one today.

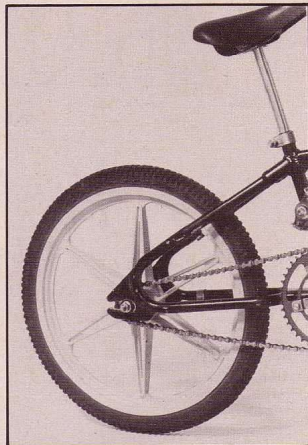


**MESINGER
MANUFACTURING**

Bethel, Connecticut 06801 (203) 743-6714

**PRODUCT
ANALYSIS**

continued from page 53



**ADVANTAGES OF
NYLON WHEELS**

If your racing machine spends its off-duty hours as a thrasher, cruiser, cafe racer, and/or trick bike, then nylon wheels have much to offer: Great looks, bright colors, low maintenance, and a higher shock-absorption factor that will reduce the beating your frame has to take and cause it to last longer. And these wheels are as indestructible as it is possible to make a product that is used by kids . . . especially BMX'ers.

STRUCTURAL STUFF

The ACS Stoker resists side deflections better than Tuff Wheels. When you take a Tuff Wheel equipped bike through a fast turn on a high-traction surface, there is a certain amount of fluttering in the front wheel, depending on tire pressure. In the ACS Stoker this fluttering is so slight you probably won't even notice it. Side load stiffness of the ACS is better than the Tuff Wheel.

SUMMARY

So, equipment fans, seeing as how this almost turned into a shoot-out between ACS Stokers and Tuff Wheels, let's finish with a comparative summary of the two.

First off, Tuff Wheels came first. This means that Skyway Recreation Products, the manufacturers of Tuff Wheels, deserve credit for concept and development of nylon bicycle wheels. This does not mean that Tuff Wheels are better,

Thruster.. FASTEST GUN IN THE EAST!

Thruster's Timmy Judge Replica Frame is 100% chrome-moly (4130) and lightweight. It's super strength and superb handling make it the winner's choice. New design rear axle dropouts put all the thrust you put on the pedal to the rear wheel...no flex! Also available with English bottom bracket, in red, white, chrome and blue.



Timmy Judge Replica



Thruster Forks are 100% chrome-moly (4130) and lightweight. The geometry eliminates "wash-out". They handle like a true racer.

Available in chrome, red, white and blue

Thruster logo T-shirts available for \$6.00 in Boys: M,L Mens: S,M,L,XL. Send 50¢ for our brochure and sticker. **Thruster logo Caps** in blue and white available for \$7.00. One size, fits all.

FACTORY TEAM EQUIPPED BY:








TIMMY JUDGE
1978 NBL National # 1 13 year old.
1978 NBL Grand National # 1 Intermediate Open.
1978 NBA Grand National # 4 14 year
Expert Class. Only rider from
east of Mississippi to win trophy.
1979 NBA/Schwinn Midwest Championship # 1 14 year old Expert Class.
1978 Orange Bowl Super National
1 13 year old.

Quality **THRUSTER** products from the makers of the world's fastest funny car, **Vanishing Point.**

Dealers and Distributors Contact:

SPEED UNLIMITED, INC.
45 Jerome Place
Wayne, New Jersey 07470
(201) 696-5768

CHICAGO AREA:
(312) 895-3307

BAUER

CYCLE SUPPLY INC.

**MIDWEST'S LARGEST
MOTOCROSS
DISTRIBUTOR**











RACE INC.





BAUER CYCLE SUPPLY INC.
404 Third Ave. North, Minn., MN 55401
OUT OF STATE CALL (800) 328-8320
MINNESOTA CALL (612) 333-2581

DEALERS ONLY PLEASE



SO. CAL.
THE "A" FRAME



100% 4130
Chrome-
Moly

AVAILABLE IN CHROME, RED,
BLACK AND BLUE

GJS So Cal 1410 E. 28th St.
Signal Hill, CA 90806

DISTRIBUTORS:
Bike Brokers/3009-B North New U.S. 41/
North Fort Meyers/FL 33903
C.Y.C. Distributing/P.O. Box 467/
Hawthorne/CA 90250
Detroit Cycle Supply/478 W. Columbia/
Detroit/MI 48201
SE Racing/1667 E. 28th St./
Signal Hill/CA 90806



NON-SLIP BMX GRIP

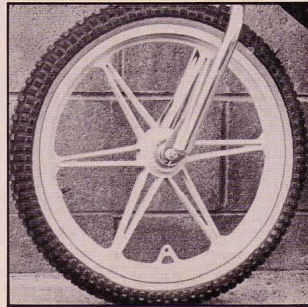
NEW & FASHIONABLE TYPE



#77-17AR



PRODUCT ANALYSIS



ACS STOKER WHEELS SPECIFICATIONS

MANUFACTURER: American Cycle Systems

MATERIAL: Zytel, a DuPont glass-filled nylon compound

CONSTRUCTION: Injection molded

RETAIL COST: Around \$32 for the front wheel, \$38 for the rear

AVAILABLE COLORS: Red, blue, yellow, black

WEIGHT: 3 pounds 3 ounces for the front wheel, 4 pounds 5 ounces for the rear

HARDWARE DETAIL: Front hub is cast aluminum, molded in place; cups are case-hardened steel; axle is 3/8 inch in diameter with 26 threads per inch. Rear hub is cast aluminum, molded in place; cups are 3/8 inch in diameter with 24 threads per inch; hub accepts a Bendix 76 4-shoe coaster brake; Bendix sprockets are available in 14, 15, 16, 18, 19, 20, and 22 teeth sizes

NOTE: A freewheel ACS Stoker will be available soon

GUARANTY: One year unconditional

but if this is to be a fair comparison, it deserves saying.

And to compare the two: ACS Stokers are slightly less expensive, a little heavier, have more side load stiffness, are made of the exact same stuff, come in the same colors, and look at least as good as Tuff Wheels. And both are, or soon will be, available with freewheel rear hubs.

To put it another way, both are high zoot equipment. *

CUSTOM BICYCLE MOTOCROSS

THE ULTIMATE SPECIALTY MOTOCROSS BICYCLE ASSEMBLY STORES IN THE NORTHWEST. COMPLETE LINES OF ALL MX COMPONENTS. MAIL ORDER SERVICE. RACE INFORMATION. THE PLACE TO SHOP FOR YOUR MOTOCROSS NEEDS!

BIKEFACTORY

Lynnwood Shop Ctr. 2241-140th N.E.
Lynnwood, Wa. 98006 Bellevue, Wa. 98005
(206) 778-4448 (206) 641-5434

THREE REASONS WHY Winners RIDE THE Competition II MITSUBOSHI TIRE

1. Unique Tread Design

The COMPETITION II's unique tread design makes it the finest handling outdoor BMX tire available today. The maximum traction in the starts and superior side wall grip through the berms keeps you in the lead from start to finish. Bad weather is never a problem. The COMPETITION II cleans itself with every revolution even in the stickiest mud.

2. High Density Nylon Cord

This lightweight baby (680 grams fr. and 460 grams r.) will take all the punishment you can dish out, the all new nylon cord increases side wall strength while decreasing energy loss and maintaining acceleration.

3. Special Rubber Compound

Long life and handling comes naturally to the COMPETITION II. The special rubber compound creates higher flexibility and greater hardness which increases cornering efficiency and provides better traction on the straights. No problem with chipping and less abrasion means more riding time for your money.

Available in 20" x 2.125" for the front and 20" x 1.75" for the rear. The coordination colors are black, blue, red and yellow.

Whether it's time for new skins or not, shoot on over to your nearest BMX pro shop today for a new pair of COMPETITION II's.



**MITSUBOSHI
BELTING LTD.**

HEAD OFFICE:
4 CHOME,
HAMAZOE-DORI,
NAGATA-KU,
KOBE, JAPAN.

• S.E. RACING • MONGOOSE • REDLINE • D.G. RACING • TORKER • RACE • STORMER

YOU CHOOSE IT...

KAR CITY'S BIG WHEELS BUILDS IT BMX COMPETITION MACHINES

A catalog to aid you, prices to please you. Race tested parts, chosen for lightness, durability and cost. We do our best to describe each part in detail. The Big Wheels Racing Team (largest in the Midwest) has tested everything we sell. 3-day Midwestern service. Order our catalog for 50c. We'll enclose a D.G. Sticker. Trick Racing Wheels our specialty. Quality our trademark, only 1st quality parts, from leading BMX manufacturers.

* Limited dealer plan available *

KAR CITY'S BIG WHEEL SHOP

622 Center Point Rd., N.E., Cedar Rapids, Iowa 52402
Phone 1-319-363-9178

• TUFF WHEELS • ENERGNONICES LUBES • SUNTOUR • SHIMINO • ARAYA • JGS

POWERLITE • ROBINSEON • J.T.

SHIPPING EVERYDAY • QUICK SERVICE



**Hutch
BMX
Racing**

The East Coast
Mail Order King

Immediate delivery by U.P.S. daily on the latest trick parts and bikes from all the big name brands.

Call or write today for our FREE price list. For a FREE decal, send a stamped, self-addressed envelope.

Hutch BMX Racing

731 Swan Cove Lane
Pasadena, Md. 21122 • 301-255-8586

CRUISERMANIA FROM RRS**THE
"CALIFORNIA
CRUISER"****A TOTALLY
TRICKED-OUT
SCHWINN SPITFIRE**

Somebody once said, "Men shall be known by the cars they drive." And, if you think about it, the guy was pretty much right.

Macho instincts and the availability of bolt-on custom accessories have turned our streets and boulevards into movable displays of ego and image. This visual smorgasbord includes everything from the low-riders and their Chevies to the four-wheel-drive dudes to the Porsche Turbo road-racers to the mini-truckers to the custom van types.

Since the advent of bicycle motocross, and more recently cruisers, the same guy now probably would add, "And kids shall be known by the bikes they ride." And he still would be pretty much right.

There are full-on racers, cafe racers, K-Mart specials, thrashers, trick bikes, and—the most-recent example of rolling image-improvement—custom cruisers.

The primo example of customizing shown here is called the "California Cruiser." It was built by those tricky devils over at RRS; the same fun guys who brought you "Advanced Trickery . . . Jeff Rutherford's \$800 racing machine" (BMXA, June 1979).

This custom cruiser was built by RRS as a show bike for the president of Schwinn Sales West, Sig Mork. But rumor has it that someone from the Schwinn factory in Chicago saw the California Cruiser and shanghaied the thing to take back to Chicago and show the big wheels.

But not before we got photos and specs to bring our trusty readers up on the current state of the art in custom cruisers.

By the way, this bugger would retail for around (choke, sputter) 1000 frogskins. Those guys at RRS don't mess around. ★

**THE "CALIFORNIA
CRUISER"
customized by RRS**

Tange TX-1200 forks, painted black

RRS custom bottom bracket conversion, brass plated, with a Phil No. 3 spindle

T.A. Professional 185mm crankset, anodized gold

T.A. 42T sprocket, anodized black

Schwinn Spitfire pedals

Sun Tour Ultra-6 chain

Edco Competition alloy headset, anodized gold, machined and shimmed to fit by RRS

Tuf-Neck, anodized gold

K&N motorcycle handlebars, brass plated by RRS

Grab On MX grips

Sun Tour bar-mount shifter and brake controls

Fluted alloy seat post

Xcaliber seat post clamp

Spitfire (Mesinger HDD-10

Super) saddle, springs brass plated by RRS

Araya alloy box rims, anodized gold

Schwinn .105 spokes

Phil sealed-bearing hubs

Phil rear disc-brake assembly

Schwinn 26 X 2.125 gumwall balloon tires

Dura-Ace Black series rear derailleur

Sun Tour Ultra-7 rear sprocket cluster

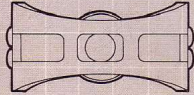
Schwinn decals

McPeak of Riverside hand lettered chain guard



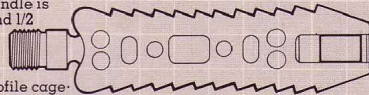
DESIGNED TO PERFORM

KKT Lightning Pedals for motocross competition.

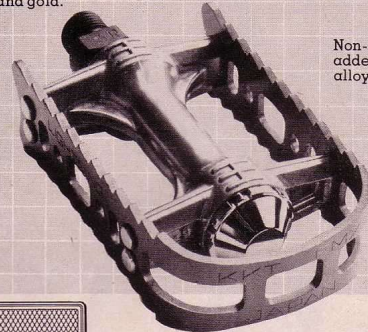


KKT's light alloy cage is anodized in three brilliant colors: blue, red, and gold.

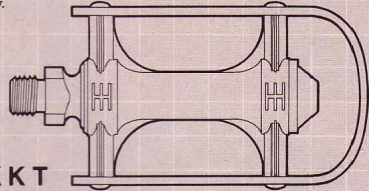
Superlight chromoly spindle is available in both 9/16 and 1/2 inch sizes.



Special Lightning-profile cage-teeth are directionally angled for positive gripping action at the gate and out of the berms.



Non-skid gripper bars provide added traction to cast light alloy frame body.



KKT
Kyokuto Manufacturing Co., Ltd. Osaka, Japan

For more information, please contact:

SHIMANO SALES CORPORATION
9259 San Fernando Road/Sun Valley/CA 91352



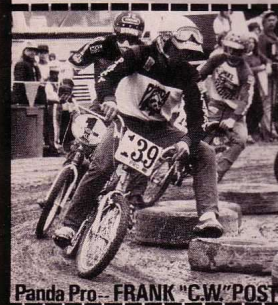
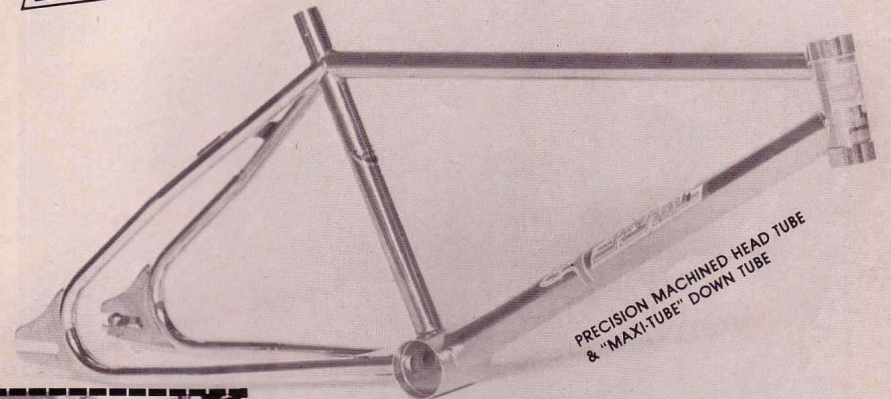
OPTIONAL REFLECTORS AVAILABLE TO MEET CPSC REGULATIONS FOR STREET USE.

TRICK STUFF

FROM panda bmx bikes



THE ALL NEW



Panda Pro-- FRANK "C.W." POST

THE PRO-AM 4130 CHROME-MOLY FORK

Light weight with tapered design for strength. Chrome-plated. The perfect complement to the Pro-Am frame ... Trick Stuff!



*Check These Features

- **WELDING:** Hellarc tungsten inert gas welding process. Strong and beautiful.
- **TUBING:** "Maxi-Tube" double strength 1-3/8" down tube. Chrome-Moly 4130 aircraft tubing.
- **PRECISION MACHINED:** Head tube & hanger machined. Joints machined for precise tubing fit. Pre-drilled brake bar.
- **JIG FITTED & WELDED:** To insure precise alignment.
- **LO-FLEX:** Designed & engineered for low frame flex rate.
- **BALANCED:** The Pro-Am retains the famed Panda "Competition Geometry" for precise balance & control, but now in a new lower profile. Great for small and large riders.
- **LIGHTWEIGHT:** The Pro-Am incorporates a fine balance between the ultra-light weight and the proper amount of material necessary for a really tough durable, precision frame.
- **NICKEL PLATED:** Beautiful high-luster & long lasting nickel plating.
- **QUALITY CONTROL:** Each Pro-Am frame is thoroughly inspected to make sure you have the finest frame available.

Order your logo stickers, patches and hats here!



HATS

- | | | | | | |
|----------------------------------|-------|------|--|-------|------|
| <input type="checkbox"/> ADDICKS | | 5.95 | <input type="checkbox"/> BMXA, large | | 50 |
| <input type="checkbox"/> ELECTRO | | 5.95 | <input type="checkbox"/> BMXA, small | | 30 |
| <input type="checkbox"/> GRAB-ON | | 5.95 | <input type="checkbox"/> CYC, rub-on | | 45 |
| <input type="checkbox"/> JT | | 5.95 | <input type="checkbox"/> CYC, clear | | 35 |
| <input type="checkbox"/> OAKLEY | | 5.95 | <input type="checkbox"/> ELECTRO, rub-on | | 50 |
| <input type="checkbox"/> SE | | 5.95 | <input type="checkbox"/> ELECTRO, tear drop | | 40 |
| <input type="checkbox"/> TORKER | | 5.95 | <input type="checkbox"/> GRAB-ON | | 40 |
| | | | <input type="checkbox"/> JMC, large | | 45 |
| | | | <input type="checkbox"/> JMC, small | | 35 |
| | | | <input type="checkbox"/> JT, large rub-on | | 50 |
| | | | <input type="checkbox"/> JT, small rub-on | | 45 |
| | | | <input type="checkbox"/> JT, large 3D | | 45 |
| | | | <input type="checkbox"/> JT, small 3D | | 35 |
| | | | <input type="checkbox"/> JT, lightning bolts | | 1.00 |
| | | | (rt and left) | | 40 |

PATCHES

- | | | | | | |
|----------------------------------|-------|------|--|-------|----|
| <input type="checkbox"/> BMXA | | 1.50 | <input type="checkbox"/> MXL | | 40 |
| <input type="checkbox"/> ELECTRO | | 1.50 | <input type="checkbox"/> OAKLEY, rub-on | | 50 |
| <input type="checkbox"/> GRAB-ON | | 1.50 | <input type="checkbox"/> PANDA, logo | | 45 |
| <input type="checkbox"/> JT | | 1.50 | <input type="checkbox"/> PANDA, name | | 45 |
| <input type="checkbox"/> OAKLEY | | 1.50 | <input type="checkbox"/> ROBINSON, rub-on | | 50 |
| <input type="checkbox"/> TORKER | | 1.50 | <input type="checkbox"/> ROBINSON, square | | 50 |
| | | | <input type="checkbox"/> ROBINSON, rectangle | | 40 |

STICKER PATCHES

- | | | | | | |
|------------------------------|-------|------|--|-------|----|
| <input type="checkbox"/> JT | | 1.75 | <input type="checkbox"/> SE, large | | 40 |
| <input type="checkbox"/> MXL | | 1.75 | <input type="checkbox"/> SE, small | | 30 |
| <input type="checkbox"/> SE | | 1.75 | <input type="checkbox"/> TORKER, round | | 50 |

STICKERS

- | | | | | | |
|--|-------|----|---------------------------------------|-------|----|
| <input type="checkbox"/> ACS | | 35 | <input type="checkbox"/> TORKER, logo | | 50 |
| <input type="checkbox"/> ADDICKS, oval | | 40 | | | |
| <input type="checkbox"/> ADDICKS, clear | | 35 | | | |
| <input type="checkbox"/> BEL-RAY, square | | 40 | | | |
| <input type="checkbox"/> BEL-RAY, rub-on | | 50 | | | |
| <input type="checkbox"/> BILL WALTERS | | 40 | | | |

DEALER INQUIRIES INVITED

TO ORDER:

- Indicate in the boxes how many of each item you want.
- Add up order and fill out order blank.
- Cut out this ad and send with check or money-order in the total amount to:

HOT STICKIES CO.
P.O. Box 3401
Redondo Beach, CA 90277

ORDER BLANK

Total amount of purchase	_____
California residents add 6% sales tax	_____
For postage and handling add 50¢	_____
Total enclosed	_____
Your name	_____
Address	_____
City	_____
State	_____ Zip _____



DISTRIBUTOR/MANUFACTURER



PANDA BIKE COMPANY
1450 FRANQUETTE AVE.
CONCORD, CA 94520
(415) 798-3950

HOT SHOTS



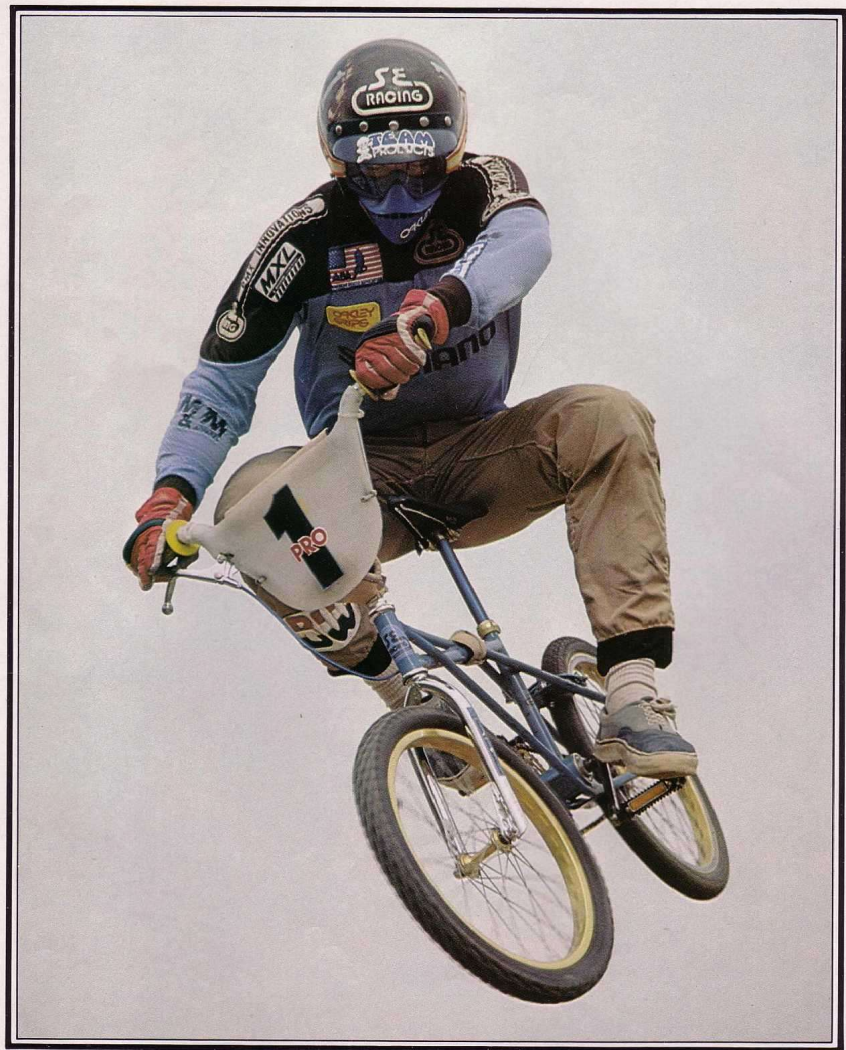
Post and PK . . . synchronized aerobatics.

HOT SHOTS



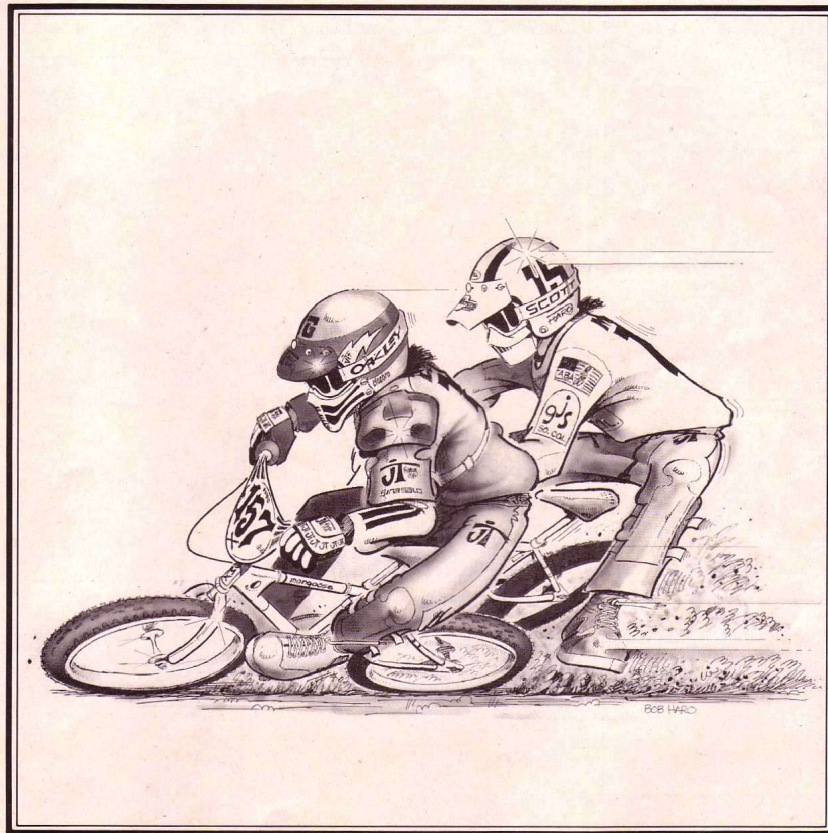
David Clinton . . . back on Shimano.

HOT SHOTS



Right now, right this minute, this is the man. Stu.

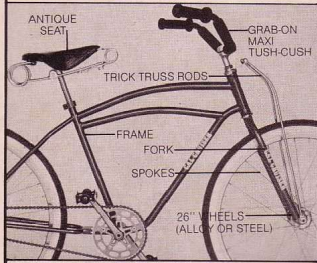
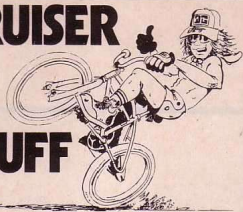
HOT SHOTS



Pen, ink, and airbrush images by Looney Tunes Haro.

CRUISER

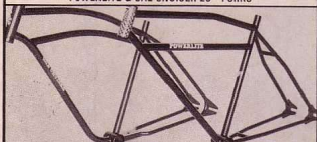
STUFF



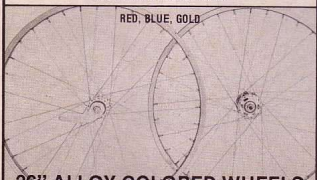
CAL-CRUISER FRAME, FORK & TRICK PARTS



ALL CHROME-MOLY
POWERLITE & CAL CRUISER 26" FORKS



26" FRAMES, NEW COLORS: IVORY, WHITE, YELLOW, BLUE, RED, BLACK. POWERLITE IS CHROME-MOLY. CAL CRUISER IS MILD STEEL.



26" ALLOY COLORED WHEELS

SEPARATE COLORED 10-5/8" SPOKES
SEPARATE ANODIZED ALLOY 26" RIMS



EVERYTHING BICYCLES

15000 STAFF COURT
GARDENA, CA 90248
(213) 532-7261

Dealers & distributors phone
Craig, Ron, or Howie NOW!



ABA*DG

continued from page 51

and took the win. Chalk up two for Juicy Jaws. But the fly poop's getting closer to the top of the pepper.

The 14 expert main lined up: Ron Anderson, Gossreau from Missouri,

Beckering, Medlin, Zagers, Mike Poulson from Utah, Ignozitto, Chris Hopkins . . . fast hombres.

The gate dropped and Medlin totally blew his start! The most important race of his life, and he blew the start. Medlin



Will Scurto picked and poked his way to fourth in the 13-14 open main.



Position on the line is critical. At ABA races you see the draw for your starting position. You may not like what you get, but at least you know it was fair.

ABA/DG GRAND NATIONALS HORSEMAN'S PARK LAS VEGAS RESULTS

TEAM TROPHY Torker

PRO MONEY
Stu Thomsen
Kevin McNeal
Frank Post

PRO TROPHY
Stu Thomsen
Harry Leary
Stanley Robinson

16 EXPERT
Joe Aguilera
Kevin Renker
Doug Olson

16 NOVICE
Tom Jacobson
Mark Darcy
Jeff Halleib

15 OVER TROPHY DASH
Stu Thomsen

15 OVER OPEN
Mike Bush
Eddie King
Mike Tisdale

15 EXPERT
Danny Wall
Eddie King
Don Atherton

15 NOVICE
Jesse Felix
Andy Patterson
Todd Carter

14 EXPERT
Rod Beckering
Ron Anderson
Mike Poulson

14 NOVICE
Ronnie Harper
Robert Holm
Sterling Rebel

13-14 TROPHY DASH
Rod Beckering

13-14 OPEN
Lee Medlin
Mike Aguilera
Mike Buff

13 EXPERT
Mike Aguilera
Sean Greening
Jeff Osmus

13 NOVICE
Andrew Zirzow
Arik Nelson
Todd White

12 EXPERT
Richie Anderson
Kelly McDougall
Chuck Mikei

12 NOVICE
Darryl Hollenbeck
Melvin Hayes
Stacy LaCombe

11-12 TROPHY DASH
Richie Anderson

11-12 OPEN
Jon Anderson
Richie Anderson
Roy David

11 EXPERT
Jeff Rutherford
Robert Compton
Brian Gass

11 NOVICE
Mike Holder
Lincoln Lucas
Todd Parry

10 EXPERT
Bodie Cook
Kyle Fleming
Doug Davis

10 NOVICE
Denny Jackson
Dave Dayton
Guy Noren

9-10 TROPHY DASH
Bodie Cook

9-10 OPEN
Doug Davis
Kyle Fleming
Mike St. Martin

9 EXPERT
Doozer Trevino
Lonnie Taton
Mike Scurto

9 NOVICE
Jason Jensen
Tim Ellis
Mark Perez

8 YEAR OLDS
Brad Francisco
Ryan Poul
Ron Corby

8 UNDER TROPHY
DASH
Jason Jensen

8 UNDER OPEN
Jason Adams
Brad Francisco
Tim Ellis

7 YEAR OLDS
Jason Adams
Chad List
Mark Cove

6 YEAR OLDS
Jason McKeel
Tim White
David Duncan

5 YEAR OLDS
Damon Wheeler
Troy Kelly
Justin Yancy

SENIOR POWDER PUFFS
Jane Wilkinson
Debbie Shobert
Leslie Burley

JUNIOR POWDER PUFFS
Dana Alexander
Angela Upton
Dawn Kuschnerait

INTERMEDIATE
POWDER PUFFS
Sue Ginrich
Sara Rutledge
Sharris Ow

CRUISER
Kevin Harlow
Mark Pippin
Tim Allen



MOLINAS CYCLE CENTER

7931-B Thornton Road
Stockton, CA 95209
(209) 951-6116

Are you having trouble
getting the "PRO PARTS"
you want?

TELEPHONE OR MAIL ORDER

We ship right to your door



Bob Reedy Pro Model



TORKER

RED LINE



COOK BROS. RACING

ARAYA

Send 50¢ for your PRO CATALOG
LINE of BMX bicycles and parts.



EXCLUSIVELY
BICYCLE MOTOCROSS

MOST COMPLETE NEW
BMX CATALOG NOW
AVAILABLE!

Check our price first!

Write now for catalog
Join free mailing list.

We ship U.P.S.
anywhere
in the
U.S.

PEDDLE POWER-TORKER-MONGOOSE-CYCLE PRO-RACE INC.
-SHIMANO-LIGUINA-COOK-BROS-DIANONDI-COMPE-ADDICKS-
-CHERIG-SHIM-SUGINO-MCS-LEIFNECK-PRO-LINE-COOL-STOP-
-MAXHAUSER-BULLSEYE-POWERLITE-SAMPA-AGOL-SUZUKI-
-ARAYA-SUPER-PRO-DIO-KIT-ANDERSON-ROBERTSON-
-TANGE-ROBINSON-FACINER-ANDALITE-WEBB-CO-TWO-
WHEELER-SPEEDO-

WES' BMX

230 Mt. Herman Road
Scotts Valley, CA 95066
(408) 438-5066 and 438-5067

FREE STICKER

IF YOU CAN PRONOUNCE

KUWAHARA

ALL YOU'VE GOTTA DO IS CALL (213) 770-2593,
SAY "KUWAHARA"
AND SEND A SELF-ADDRESSED STAMPED ENVELOPE TO:

EVERYTHING BICYCLES

15000 STAFF COURT, GARDENA, CA 90248

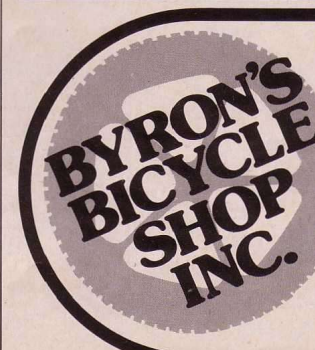
BMX AT ITS BEST

BMX Mail-Order
Catalog—\$1.00

(\$1.00 refundable on first
order of \$10.00 or more)

We'll ship C.O.D.
within 24 hours
(upon availability)

Byron's Bicycle Shop
299 Glenwood Lansing Road
Glenwood, Ill. 60425 • (312) 758-4500





Mike Aguilera, proving that his sudden rise to glory was no fluke. First in 13 expert. Second in 13-14 open.

was suddenly up the creek without a paddle. Fourth at the wire. Scratch Medlin.

That meant that the winner of the ABA National No. 1 plate would be decided by a count of the sign-ups in Kyle Fleming's and Richie Anderson's classes! Unbelievable! Incredible!

In the 8 and under Trophy Dash, Jason Jensen, still hot on the trail of the first quad in history, thrashed on everybody. Three down, one to go. But it was at this point that the fly poop surfaced in Jason's pepper shaker. Where do you suppose the 9-10 Trophy Dash came in the program? Right after the 8 and under Trophy Dash, of course.

So ol' Juicy Jaws crawled back to the gate, panting, tongue hanging down on his number plate. But the little sucker pulled a hole-shot. And held it. Right up 'till 10 year old Bodie Cook passed him in the last turn. And if you remember, Bodie's the dude that beat Fleming and Davis in the 10 expert main, so Jason wasn't exactly racing a bunch of squids.

Spencer's
**WORLDWIDE
BMX
MAIL ORDER**

**WORLDWIDE
QUICK REPLY**

COAST WHEELS

PHONE US YOUR ORDERS (714) 970-7052

All items in this advertisement are manufactured for **WORLDWIDE BMX and COAST WHEELS**. ALL PRICES ARE RETAIL.

Send this order form to:
WORLDWIDE BMX MAIL ORDER SERVICE
P.O. Box 2189, Yorba Linda, CA 92686

CHECK BOXES BELOW (DON'T FORGET COLORS, ETC.)

CATALOG AND DECAL—\$1.00
 CATALOG AND 10 HOT DECALS—\$3.00
 COAST WHEELS CRUISER FRAME—\$80.00 red blk
 COAST WHEELS CHROME-MOLY BMX FRAME—\$90.00 red blk blue
 STEEL BOX BARS—\$9.00 double stem single stem red gold blue cro
 STEEL V-BARS—\$11.00 double stem single stem red gold blk cro
 ALLOY BOX BARS—\$16.00 double stem red gold blue
 ALLOY V-BARS—\$19.00 double stem red gold blue
 CRUISER BARS—\$8.00 red gold blue cro gloss blk
 ALLOY SEAT POST—\$4.00 7/8" 3/16" red gold blue blk silver
 CRUISER CHROME-MOLY FORKS—\$35.00 red blk cro
 CRUISER STEEL FORKS—\$26.00 cro
 BMX CHROME-MOLY FORKS—\$32.00 red blue blk cro
 DOUBLE STEM PAD—\$3.00 red yellow blue blk
 SINGLE STEM PAD—\$2.50 red yellow blue blk
 FRAME PAD—\$3.00 red yellow blue blk
 CROSS BAR PAD—\$2.50 red yellow blue blk
 V-BAR PAD—\$3.50 red yellow blue blk

ADD \$3.00 POSTAGE AND HANDLING (Foreign orders add \$6.00)
CAL. RES. ADD 6% TAX TOTAL ENCLOSED
 CHECK MONEY-ORDER C.O.D. MASTER CHARGE VISA
 card # _____ expiration date _____

signature _____
 NAME _____
 ADDRESS _____
 CITY _____ STATE _____ ZIP _____

Make checks payable to **WORLDWIDE BMX**

CATCH GRIFFS PANTS AND JERSEYS!

GRIFFS accepts the challenge: BMX riders, familiar with the dynamite looks and features of the uniforms flaunted by American teams in official MX competition, wanted their own. The Result? **Griffs pants and jerseys.**

The Griffs line of pants is the first ever designed to meet the needs of the leading Pro BMX racers. Intense reds with yellow, blues with red and yellows with blue — Griffs makes sure you'll be **noticed** when you cross that finish line.

Now what about comfort? Listen, Griffs **knows** you're tired of hothouse pants. You shouldn't have to keep opening zippers and shoving 'em down to get air in. A cactus needs heat. The BMX rider needs **breathable** pants. And tough? It took **23,000** strokes of an Abrasion machine to wear through the Barrier Cloth which protects knees and shins. Hips and knees are protected by thin Ensolite pads that are tougher than competitors' thick pads. Flashy protection — without bulk!

If you're gonna ride fast and win, the only way to fly is in **Griffs pants and jerseys.** You and Griffs. No one else can catch us.

THE FASTEST GUYS IN BMX ARE NOW IN OUR PANTS, TOO.

Pants available in **small boy's** sizes: B22 for 21-22" waists, B24 for 23-24" waists. **Teen boy's:** T25 for 24-25", T27 for 26-27". **Adults:** XXS (27-28"), XS (29-30"), Small (31-32"), Medium (33-34"), Large (35-36").

Long Sleeve Poly/Cotton Racing Shirts and T-shirts: S,M,L, Boys' M and Boys' L.

Dealers, catch Griffs by calling the distributor nearest you:

Security Seal Company
(800) 645-2990

Steve Stackable Products
(512) 264-1488

Iron Horse MC Supply
(713) 665-4321

Jim O'Neal Dist. Co.
(800) 423-5002 (213) 344-5175

Brothers Dist. Co.
(801) 278-6695

For additional information call or write:
GRIFFIN VISA-THERM
 P.O. Box 486
 Bridgeport, Conn. 06604
 (207) 335-0721

When the competition's tough,
rely on the pedals that get there first.

**KKT
surefoot**



Available
in black, red, blue,
gold and chrome plated.



Competition. The name of the dealer's game. No room to slip in judgment. It's quality BMX pedals that racers want and KKT delivers SUREFOOT with chrome-moly spindles built to survive the punishment only kids can deal out. Order long or short models, each with notched end plates and concave grip surfaces designed to keep feet from slipping on crucial turns. Arm yourself with the only choice in pedals. SUREFOOT. And win the dealer's race.



Distributed by
CYCLES PEUGEOT U.S.A. INC.
Eastern Division: 495 Boulevard
Elmwood Park, NJ 07407
Tel. (201) 797-6660
Western Division: P.O. Box 6050
Compton, CA 90220
Tel. (213) 537-3600

KKT surefoot

Because there's no room for error in BMX.

ABA★DG



The 13 expert class, bakin' those cakes: Zagars, Kenny Lee, and Awesome Osmus in the lead.

Well anyway, tough buns, Jason. You're just gonna have to settle for two triples in a row (first time ever) and being the fastest 8 year old in the world. It's a hard life, kid.

But the largest race in BMX history

wasn't quite over yet. The Pro's were lining up; Anthony Sewell, the Corona Kid, Stanley Robinson, Stu, David Clinton, Wild Man Frank Post, Turnell Henry, and Brent Patterson. Bucks up for grabs: \$2500 purse, \$3000 in

contingencies, and a big fat diamond ring.

Off the line Stu powered to a very slim lead. The Corona Kid, Kevin McNeal, put a bull dog bite on second, Post grabbed third, Clinton swooped into fourth.

The ferocious competition was for second. Post was closing on McNeal. Stu already had first locked up, if he made no mistakes.

In the last turn McNeal looked back and Post shot up even with him. It was time to hang it ALL out. Raw blazing power applied.

Stu won. Post and McNeal photo-finished. McNeal was given a questionable second. Post settled for third.

And now we're down to it. The nitty-gritty. Who won the ABA National No. 1 plate?

Well, sports fans, it seems like when everything was counted up, there were 13 more sign-ups in the 12 expert class than in the 10 expert class.

The rumble of an avalanche was heard across the nation.

**PUT THIS
HEADSET ON
and be quick in the pits**

BEFORE A RACE MAKE A COMPLETE ADJUSTMENT OF HEADSET

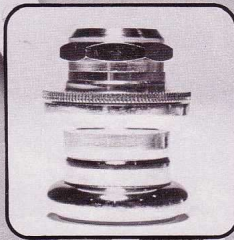
The upper head cone is especially made for fast adjustment with a 30mm spanner, which is better than adjusting by hand.

TANGE SEIKI CO., LTD.
HEAD OFFICE: 3-2-2, NANSYO CHO,
SUKA CITY, OSAKA JAPAN
PHONE: 0722-27-9511
TOKYO BRANCH: 5-15-1, MIYAGI ADACHI-KU,
TOKYO JAPAN
PHONE: 03-914-2291

GOLD COLOR
WASHER

Accurate circumference
MX-2 HEADSET

For more information contact
SHIMANO SALES CORP.
9259 San Fernando Road,
Sun Valley, California
91352 • (213)767-7777



RACE INC.

MANUFACTURERS OF QUALITY BMX PRODUCTS
STRONG AS A ROCK — LIGHT AS A FEATHER

Currently available are 6061-T6 aluminum frames, handlebars and seatposts, 100% cro-moly frames, forks, handlebars and seatposts. More products are being tested and will be available soon. All products are Race, Inc. engineered for maximum strength, performance and appearance, 100% fixture welded, and heat-treated after welding.

RACE INC., 1632 W. 139th Street, Gardena, CA 90249 • (213) 532-8790
DISTRIBUTOR SALES ONLY

DISTRIBUTORS STOCKING RACE, INC. FRAMES:
BMX-East Inc., 670 Industrial Dr., Tallahassee, Florida 32304 • **Cycles Peugeot**, 18805 Laurel Park Rd., Compton, CA 90220 • **Everything Bicycles**, 22122 S. Vermont Ave., Torrance, CA 90502 • **Jewelot Co.**, P.O. Box 349, La Honda, CA 94020 • **Laguna Distributors**, 23302 Vista Grande, Laguna Hills, CA 92653 • **Panda Bike Co.**, 1450 Franquette Ave., Concord, CA 94520 • **S E Racing**, 1667 E. 28th St., Signal Hill, CA 90806 • **Schwinn Sales Midwest**, 2101 Arthur Ave., Elk Grove Village, Illinois 60007 • **West Coast Cycle**, 8631 Hayden Place, Culver City, CA 90230

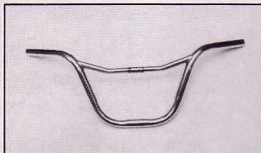


C.D.I.

One of the largest distributors in the southwest.

We carry all the popular BMX equipment.

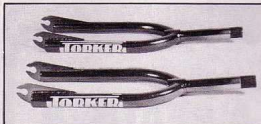
Dealers only call today
(214) 620-0124
48-HOUR SHIPMENT!



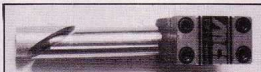
MCS MICRO HANDLEBAR



TRACKER GRIP



TORKER CHROME-MOLY FORKS



MCS MINI STEM



TORKFLYTE COMPLETE BIKE

C.D.I.
3115 Garden Brook
Dallas, Texas 75234

LATE NEWS FLASH

NBA/MONGOOSE/BMX PLUS GRAND NATIONALS RESULTS

OPEN PRO
Stanley Robinson
Frank Post
Kenny Nachman

TROPHY DASH
Stanley Robinson
Danny Wall
Lee Medlin

16 EXPERT
Stanley Robinson
Joe Aguilera
Tinker Juarez

16 NOVICE
John Severin
Mike Miranda
Victor Doneluis

15 EXPERT
Eddie King
Mike Bush
Danny Wall

15 NOVICE
Andy Patterson
James Stock
Omar Herrera

14 OVER OPEN
Danny Wall
Lee Medlin
Eddie King

14 EXPERT
Lee Medlin
Charles Williams
Trenon Jarvis

14 NOVICE
Richard Palmer
Keith Abrahamson
John Luhens

11 TO 13 OPEN
Mike Aguilera
Darrell Young
Joe O'Neal

13 EXPERT
Mike Aguilera
Chris Tripp
Mark Bush

13 NOVICE
John Herrera
Danny Alway
Peter Jones

12 EXPERT
Richie Anderson
John Anderson
Chuck Mitel

12 NOVICE
Brett Bensen
John Proboviah
Martin Hernandez

11 EXPERT
Roy Daniel
Geoff Rutherford
Mike Giem

11 NOVICE
Kevin Cooper
Eric Doan
Mike Corby

10 UNDER OPEN
Doug Davis
Kyle Fleming
Mike King

10 EXPERT
Kyle Fleming
Mike King
Doug Davis

10 NOVICE
Mike Horten
Bruce McDenmoortt
Carl Butler

9 EXPERT
Lonnie Tatton
Toby Oakland
Chuckie Southwick

9 NOVICE
Mark Perez
Curtis Lew
Eric Carter

8 EXPERT
Tim Ellis
Steve Hayes
Robert Morris

8 NOVICE
Jason Adams
Dustin Drum
Shannon O'Compo

7 UNDER EXPERT
Trevor Rigott
David Gugale
Rusty Jones

7 UNDER NOVICE
Scott Green
Jeff Bauland
Jason Christy

13 OVER POWDER PUFFS
Misty Dong
Kim Johnson
Jan Wilkinson

12 UNDER POWDER PUFFS
Sara Rutledge
Sue Gingrich
Michelle McCourt

13 OVER POWDER PUFFS
Misty Dong
Kim Johnson
Jan Wilkinson

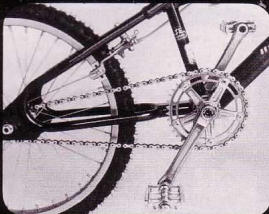
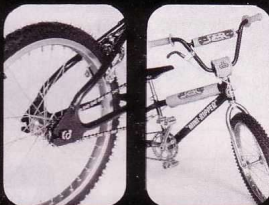
12 UNDER POWDER PUFFS
Sara Rutledge
Sue Gingrich
Michelle McCourt



PRO SERIES



(C.P.S.C. approved reflectors and chain guard included.)



BIKE KITS

SE Racing Pro Series Bike Kits available in P.K. Ripper, Mini-Ripper, GJS, Race Inc., STR and O.M. 26" Models. For more information on the full line of SE Racing bikes, Actionwear, safety equipment and components, contact us.

Kids, send \$1.00 for 1 year subscription to BMX BUGLE c/o

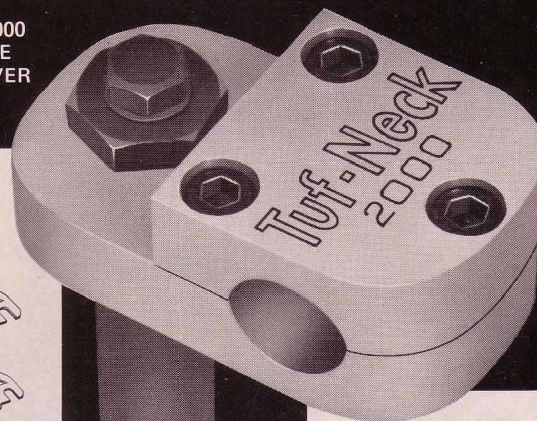
SE RACING
1667 E. 28th Street
Signal Hill, CA 90806

Dealers, call Scot
(213) 426-6461

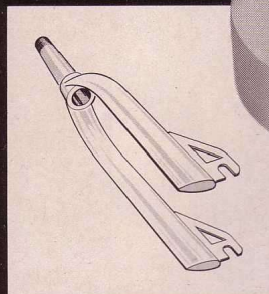


Quality BMX Parts

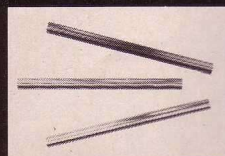
NEW TUF-NECK 2000
RADIUSED SHAPE
LIGHTER THAN EVER



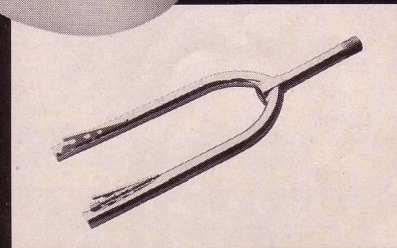
Tuf-Neck Stem



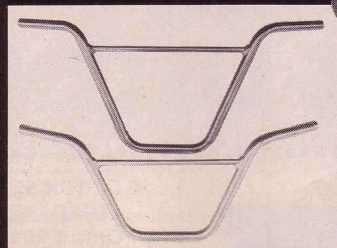
Superflight Streamline BMX Fork



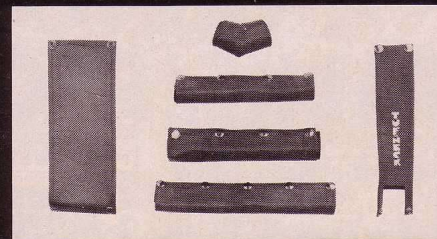
Super Seat Posts



Impala Forks



Super-Light Chrome-Moly Handlebars



Quality Vinyl Pads



SUPERBYKE
MANUFACTURING CO., INC.

609 W. COVINA BLVD., SAN DIMAS CA 91773
(714) 599-0737 599-6957 • (213) 967-6715

Distributor for Northwestern States:
SPORTS SUPPLY CO. • 1921 MILDRED WEST • TACOMA, WASHINGTON • (206) 564-1920



WHEN THE MOST FACTORY MAG TALKS, PEOPLE LISTEN.



SUBSCRIBE TO MIGHTY BMXA, THE BIG NOISE IN BMX!



BICYCLE MOTOCROSS ACTION

P.O. BOX 5277
TORRANCE,
CALIFORNIA 90510

\$14.50 FOR ONE FULL YEAR (12 ISSUES). Check enclosed. Canadian and Mexican subscriptions add \$3.00 for additional postage. Foreign subscriptions add \$4.00.

NAME (print) _____
ADDRESS _____
CITY _____
STATE _____ ZIP _____

Please allow 30 days to receive your first issue.

INDEX OF ADVERTISERS

ACS	55	NEOTECH INTERNATIONAL CORP.	17, 27
ADVANCED TRICKERY	79	OAKLEY	31
BARON'S BIKE SHOP	77	OSAKA	58
BASSETT RACING	44	PANDA BIKE CO	63
BAUER CYCLE SUPPLY INC.	56	PEDALER'S EAST	31
BEAVERS BIKE SHOP	35	POWERLITE	11
BIKECLOGY	45	PRO-TEC, INC.	37
BIKEFACTORY	58	RRS	17
BILL WALTERS LEATHERS	26	RACE, INC.	73
BMX PRODUCTS	8, 9	RED LINE ENGINEERING	15
BYRON'S	69	ROBINSON RACING PRODUCTS	35
CDI	74	SE RACING	74
CHAIN BIKE/ROSS	16	SCHWINN BICYCLE CO.	80
COMPETITION II	59	SCOTT/MATHAUSER	53
DAX STAND	36	SHAKESPEARE	77
DG PERFORMANCE	36	SHIMANO	5
DURHAM BICYCLES	14	SKYWAY RECREATION PRODUCTS	42
EVERYTHING BICYCLES	23, 68	SPEED UNLIMITED	57
GJS	56	SPENCER'S BMX	70
GRIFFS	71	STICK-EM-UP	53
GT BMX	12	SUPERBYKE	75
HARO DESIGNS	46	TANGE	13
HOT STICKIES CO.	62	TANGE SEIKI	72
HUTCH BMX RACING	58	TARTAN BICYCLE SALES	53
INTERNATIONAL SPORT EQUIPMENT	49	TART CHICAGO	12
JT RACING	20, 21	TERRYCABLE	14
JOHAR MANUFACTURING	50, 51	T.I. STEEL TUBES	4
KKT PEDAL	62, 72	TRACKER	22
KASHIMAX	18, 19	TROXEL MANUFACTURING CO.	2
KAR-CITY	58	TUF-NECK, INC.	10
KOOL STOP	48	U.S. SALES CO.	32, 33, 77
KUSUKI	54	VAN DOREN RUBBER CO.	7
KUWAHARA	34, 69	VERA'S LEATHERS	47
MESINGER MANUFACTURING	56	WEBCO	53
MKS PEDAL	54	WES' BMX	69
MOLINA'S	69	WOODEN WHEELS	53
NAGAOKA	6		

BICYCLE MOTOCROSS ACTION BINDERS



Save and protect your treasured copies of the Most Factory Magazine in this permanent volume. • These durable binders are custom silk screened with a yellow BICYCLE MOTOCROSS ACTION logo on the cover and the spine. Naturally the binder is blue, our other favorite color. • Time to clean up that stack of loose magazines in your bedroom or out on the coffee table. Each binder securely holds 12 copies, neatly organized at your fingertips for ready reference. • These binders will make an attractive addition to your library. (You do have a library, don't you?) Order several for your collection.

Only \$5.95 each • (Price includes shipping and handling)

U.S. Sales Co.

P.O. Box 3599
Redondo Beach, CA 90277

Please send me _____ BICYCLE MOTOCROSS ACTION binders at \$5.95 each, postpaid. California residents add 6% sales tax. Total enclosed.

All orders shipped via U.P.S.

Name _____
Address _____
City _____
State _____ Zip _____

Please allow 4 weeks maximum for delivery.

Changing your address?

Keep your subscription coming. Notify us at least six weeks in advance.

Mail to:

BICYCLE MOTOCROSS ACTION

P.O. Box 5277
Torrance, CA 90510

Paste mailing label (with old address) here.

Write in NEW address below:

NAME _____
ADDRESS _____
CITY _____
STATE _____ ZIP _____

LARGEST CIRCULATION OF ANY BMX PUBLICATION

BICYCLE MOTOCROSS ACTION

NUMBER OF COPIES DISTRIBUTED THIS ISSUE: 62,000

HOT NEWS FLASH!

STU JOINS RED LINE

In the BMX coup of the year, Stu Thomsen, the sport's most prestigious rider has signed on the dotted line for Red Line. For 1980, Stu will travel extensively, racing and managing what Red Line has billed as "THE TEAM."

BARON'S BIKE AND SPORT SHOP

CUSTOM BMX RACERS MADE TO ORDER AT UNBELIEVABLE PRICES.



FEATURING MONGOOSE & REDLINE PRODUCTS

4011 W. 182 St.
Torrance, CA 90504
(213) 532-5194

SHAKESPEARE'S BMX

Mail Order Specialists Best For Less

Send for FREE catalog
P.O. Box 503
Ocean City, Md. 21842
(301) 289-4948

Red Line Cook Bros. Tuf-Neck



ODDS & ENDOS



Stu; the BICYCLE MOTOCROSS ACTION No. 1 Racer . . . and a whole lotta air.

PHONE ORDERS

GRAND OPENING SALE!
Call us and ask for
your **FREE** BMX
catalog and
sticker

MAIL ORDERS

WE ARE CHICAGO'S NO. 1 BMX DEALER! Check
out our prices—
catalogs sent
FREE!



YOU CAN WRITE TO
ADVANCED TRICKERY
1410 Waukegan Rd.
Glenview, IL 60025

RIDERS READY, PEDALS SET...
DIAL (312) 729-5533
(312) 729-5534

And ask for your **FREE**
BMX catalog and
sticker

TIRED OF MAIL ORDER PROMISES?
You may be the fastest rider,
but we've got the fastest
and friendliest
service.

FOR THOSE WHO ALREADY KNOW US,
thanks for your business and
cooperation. We have
expanded and now
have faster
service.

Hey, check out the RAD ad above.

Yeah, I did, so what?

Whad ya mean so what, haven't you heard?

Heard what?

Heard about Advanced Trickery.

Maybe. Are those the guys that put on the largest
INDOOR DIRT track BMX race last year, with
5 foot trophies?

Yep, that's them, and they have a super fast mail
service. I called up and placed an order and it was
delivered within 4 days.

Yeah, but you live in Illinois where they are.

So what? They deliver **OUT** of STATE within 10 days
to anywhere, and that's fast.

Yeah, but what do they charge for that fast service?

Well, I can't tell you because it varies, but if you call
them you get a **FREE** BMX catalog and sticker just for
calling or writing.

Hey, now that sounds pretty good. But where did
they get that name?

You mean Advanced Trickery?

Yeah, it's kinda long.

Well you see, these guys got this store and **ALL** they
sell is **TRICK** BMX parts and bikes, but they only sell
the **Advanced Trick** stuff, which means you know like
the **BEST TRICK** stuff. Well anyway, they couldn't call
it **Advanced Trick** because it sounds dumb, so they
called it **Advanced Trickery**. It's long, but it's "cool."

Well what trick parts do they sell?

Don't ask me again, I told you they've got everything,
just call them up and they'll send you their **FREE**
BMX catalog and a sticker.

Hey, are they gonna do another one of their indoor
dirt track BMX races?

Yeah, they're workin' on it, but this one is supposed
to be bigger, with a **PRO** purse and everything.

WOW! How can I find out about it?

Just call up **Advanced Trickery** and ask.

What's the number?

It's in the RAD ad above.

SCHWINN...THE DIFFERENCE BETWEEN RIDING AND WINNING

HERE HE COMES!
TED GUILMETTE
...ANOTHER HOT-SHOE
FROM THE SCHWINN
FACTORY RACING TEAM
ON THE RECORD-BREAKING

THE STING

Pros know the difference between riding just for the fun of it and riding to win... the Hot Shoes who take 'em from the start are out there on The Sting by Schwinn... the Hot One with the exclusive Schwinn Tri-Oval chrome-moly BMX frame. Your Schwinn Dealer has one waiting to win for you.

SCHWINN

Consumer Relations Department
1856 N. Kostner Avenue
Chicago, Illinois 60639

Send 35¢ for the all-new 1980 Schwinn Catalog of bicycles and accessories.